

U.I. Lapp GmbH	<b>DATASHEET</b>	
	<b>SKINDICHT® KU-M</b>	52104489 14.11.2013

Enables the use of cable glands with smaller connection threads than the existing threaded holes



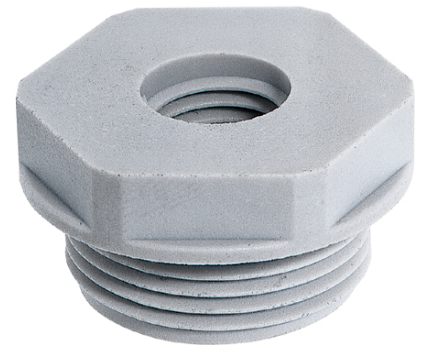
Assembly time



Space requirement



Connector with standard housing unit



### Application range

Machines  
Devices  
Housings

### Design

Metric connection thread acc. to EN 50262

### Remark

Photographs are not to scale and do not represent detailed images of the respective products.

### Technical Data

Thread, male M1:	63 x 1.5
Thread, female M2:	40 x 1.5
SW (mm):	68
Pieces / PU:	5
Colour delivered:	Light grey (RAL 7035)
Material:	Polyamide, glass fibre-reinforced
Temperature range:	-40°C to +100°C

Product Management	Document: SKINDICHT® KU-M	1 / 1
--------------------	---------------------------	-------