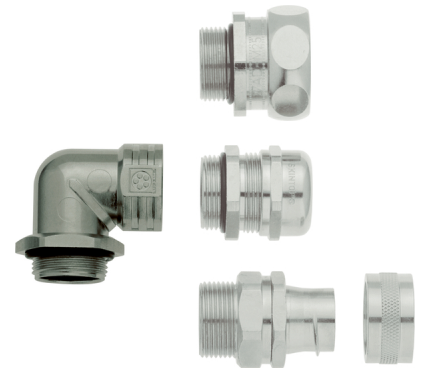


U.I. Lapp GmbH	<h1>DATASHEET</h1>	
	<b>SKINDICHT® RWV-M without E+D</b>	52107831 14.11.2013

Combination of different conduit glands is possible  
Space- and weight-saving application due to thin cable diameters  
Decrease in installation height  
Cable runs parallel to the housing wall  
Corrosion-resistant



Corrosion-resistant



Space requirement



Connector with standard housing unit



Temperature-resistant

### Application range

Angled glands are used in areas where cables have to run in parallel to the housing wall.  
Electric motor manufacturing  
Machine and equipment manufacturing  
Plant engineering  
Light and sound applications

### Design

Metric connection thread acc. to EN 50262

### Note

The protection class is dependent on the combination with the various special glands. The minimum standard is IP 55.  
Counter nut to be used: SKINDICHT® SM-M  
Cable glands are not included in scope of delivery

### Remark

Photographs are not to scale and do not represent detailed images of the respective products.

Product Management	Document: SKINDICHT® RWV-M without E+D	1 / 3
--------------------	--	-------

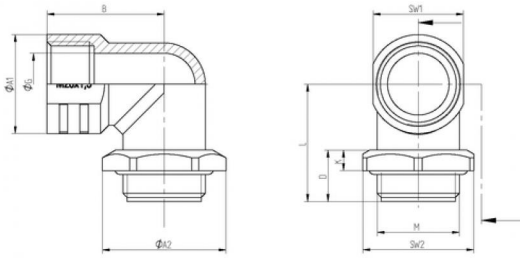
U.I. Lapp GmbH	<b>DATASHEET</b>	
	<b>SKINDICHT® RWV-M without E+D</b>	52107831 14.11.2013

**Technical Data**

Article designation / size:	25 x 1,5
B in mm:	30
Thread length, D (mm):	13.5
K:	5
L:	31
Ø G:	20
SW1:	27
Ø A1:	29
SW2:	32
Ø A2:	35.7
Pieces / PU:	10
Material:	Body: zinc die-casting Hexagon nut: nickel-plated brass O-ring: NBR
Protection rating:	IP 55
Temperature range:	-20°C to +100°C

Product Management	Document: SKINDICHT® RWV-M without E+D	2 / 3
--------------------	--	-------

U.I. Lapp GmbH	<h1>DATASHEET</h1>	 <b>LAPP GROUP</b>
	<b>SKINDICHT® RWV-M without E+D</b>	<b>52107831</b> <b>14.11.2013</b>



Product Management	Document: SKINDICHT® RWV-M without E+D	3 / 3
--------------------	--	-------