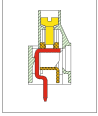


MB910 PCB Terminal Block, Modular



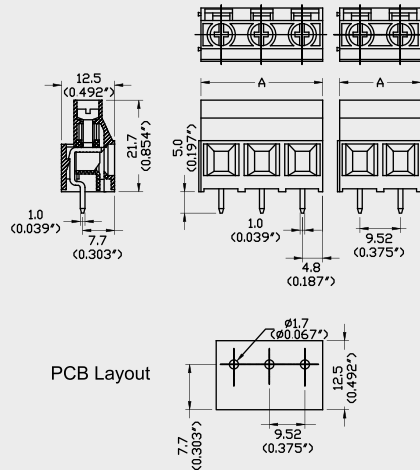
DIMENSIONS/POSITIONS

MB910-952M

間距	Pitch	9.52mm
位數	Poles	2 ~ 3Poles
尺寸a	Dimension a	9.52mm
長度 A	Length	A= 9.52xP(P≥2)
塑膠本體	Housing Material	PA 66
壓線圈	Cage Clamp	Steel, Ni Plated
端子	Contact	Brass, Tin Plated
螺紋	Screw Thread	M3.0, Steel, Zinc Plated
電線線徑	Wire Size	10 ~ 24AWG
PCB孔徑	PCB Hole Diameter	1.7mm
最大緊固扭矩	Tightening Torque, Max.	9.0 Lb-in
環境作業溫度	Operating Temperature	-40°C to +105°C

TECHNICAL DATA

連接符合標準 Connection in acc. with standard EN-VDE		
額定電流 I _N	Nominal Current I _N	25A
額定橫截面	Nominal Cross Section	6.0mm ²
最大負載電流	Maximum load current	25A
絕緣材料	Insulating Material	PA
阻燃等級, 符合UL94 Inflammability class acc. to UL94		V0
額定電壓, UL/CUL Nominal voltage, UL/CUL		300V
額定電流, UL/CUL Nominal current, UL/CUL		30A



Note:
 Screw Plating: Changes are available upon request
 Cage Clamp: MB912: Brass