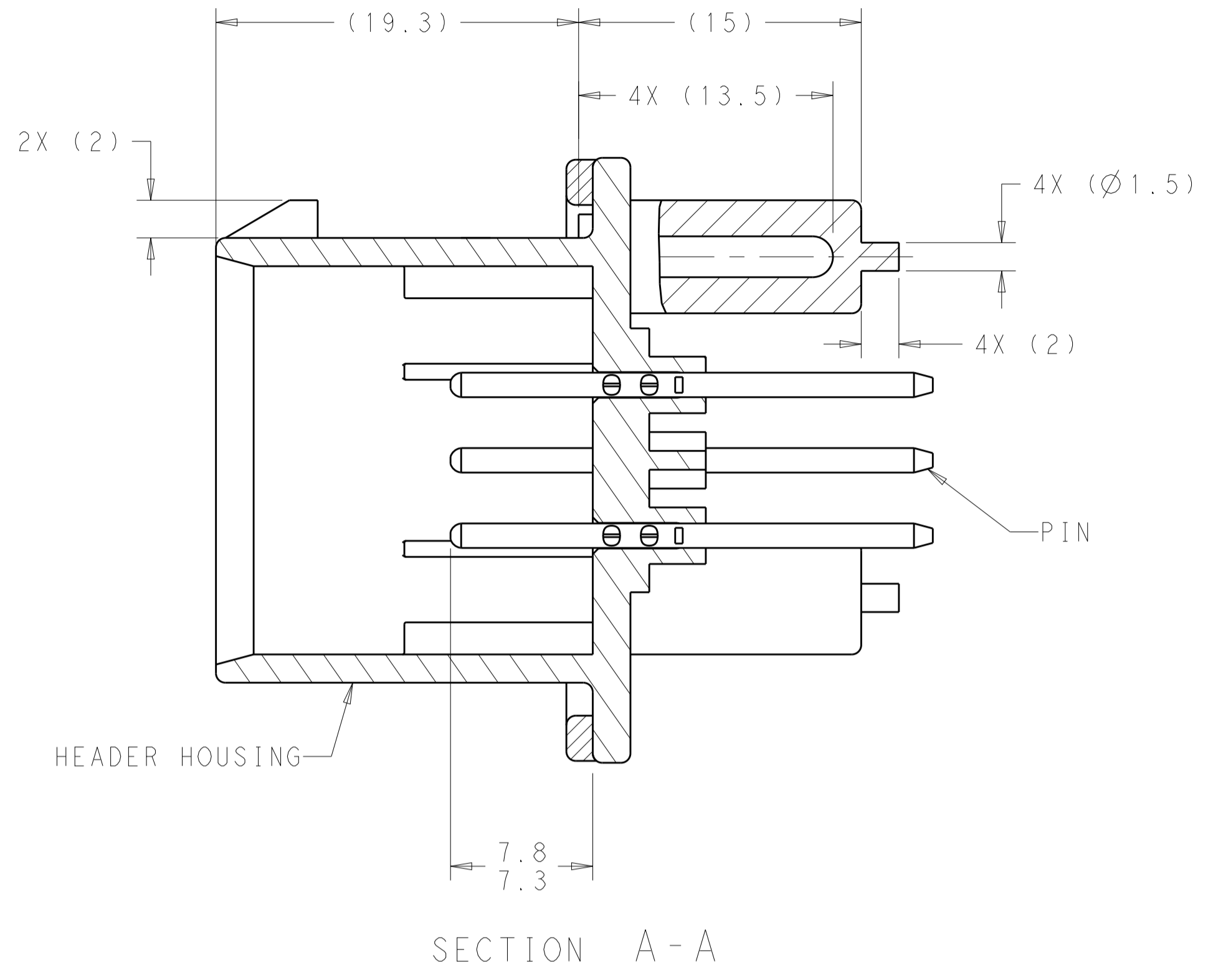
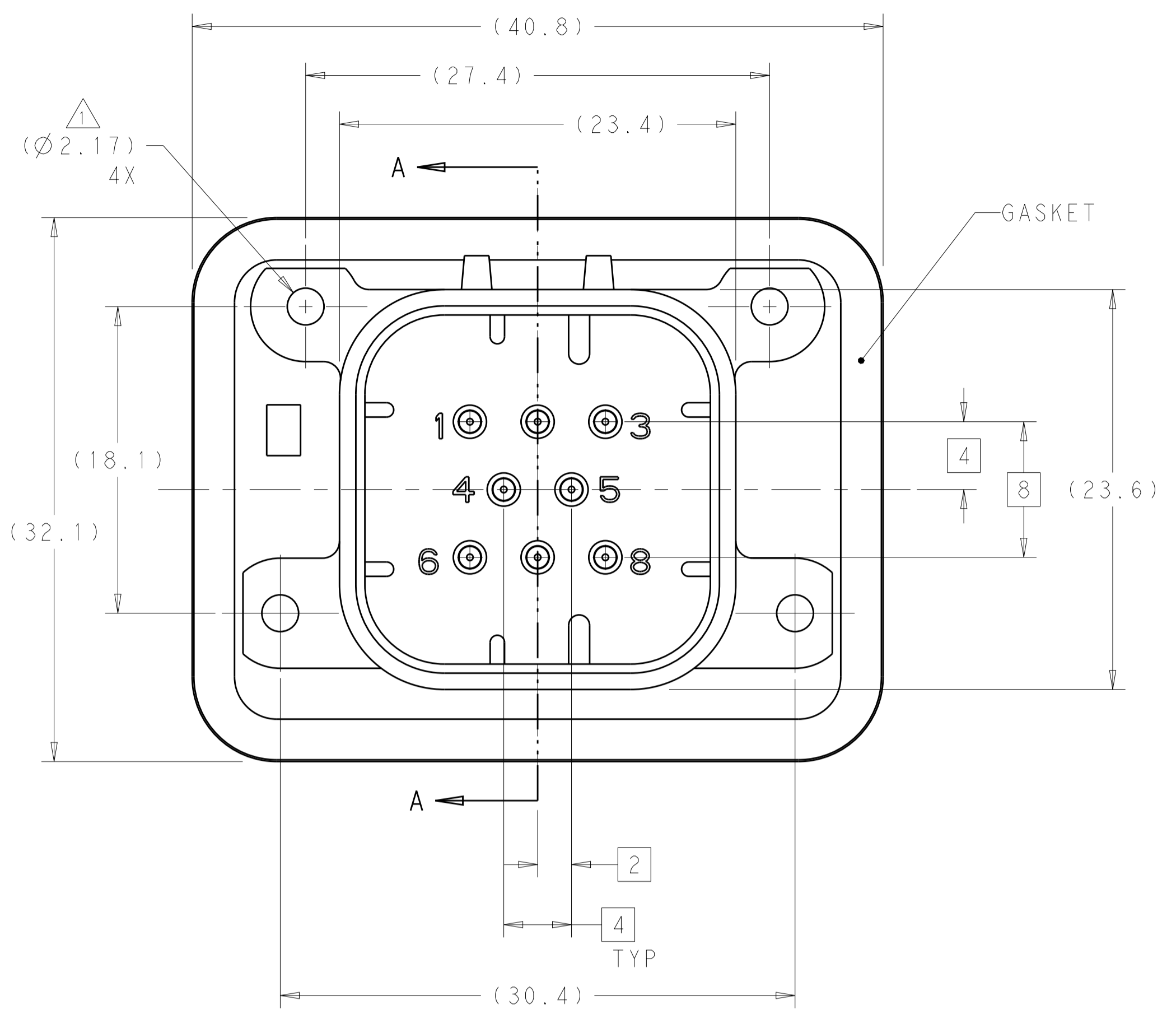
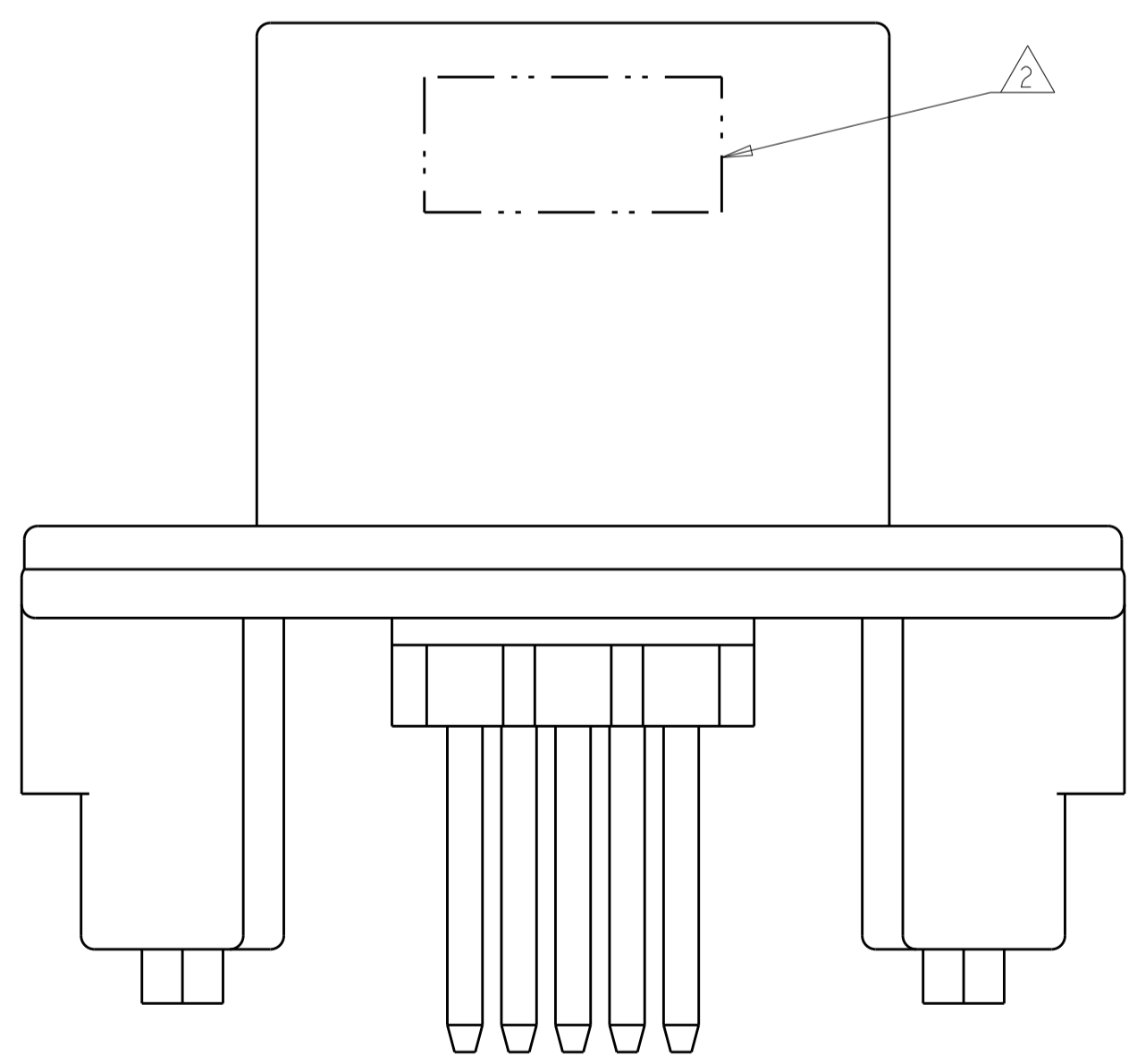


| REVISIONS | | | | |
|-----------|-----|---------------------------|-----------|-------|
| P. | LTN | DESCRIPTION | DATE | APP'D |
| B4 | | REVISED PER ECO-12-009257 | 29MAY2012 | DD DS |
| B5 | | REVISED PER ECO-13-020268 | 31DEC2013 | DD DS |
| B6 | | REVISED PER ECO-14-009938 | 02JUL2014 | DD DS |
| B7 | | REVISED PER ECO-14-019367 | 20JAN2015 | DD DS |



- 1 ACCEPTS #4 SELF TAPPING THREAD FORMING SCREWS OR METRIC EQUIVALENT. DRIVE TO 0.6-0.8 N-m
- 2 DATE CODE TO BE BRANDED IN THIS LOCATION PER TE SPEC 102-60. FIRST 2 DIGITS = YEAR, SECOND 2 DIGITS = WEEK, LAST DIGIT = DAY.
- 3 MATERIALS: GASKET - SILICONE
 HEADER HOUSING - GLASS FILLED PBT
 PINS - TIN OR GOLD PLATED BRASS
- 4 HOUSING COLORS ARE MECHANICALLY KEYED TO MATE ONLY WITH IDENTICALLY COLORED PLUG ASSEMBLIES.
- 5. HEADER MATES TO PLUG ASSEMBLY 776286 WHICH USES REELED TERMINAL 770520 OR LOOSE PIECE TERMINAL 770854

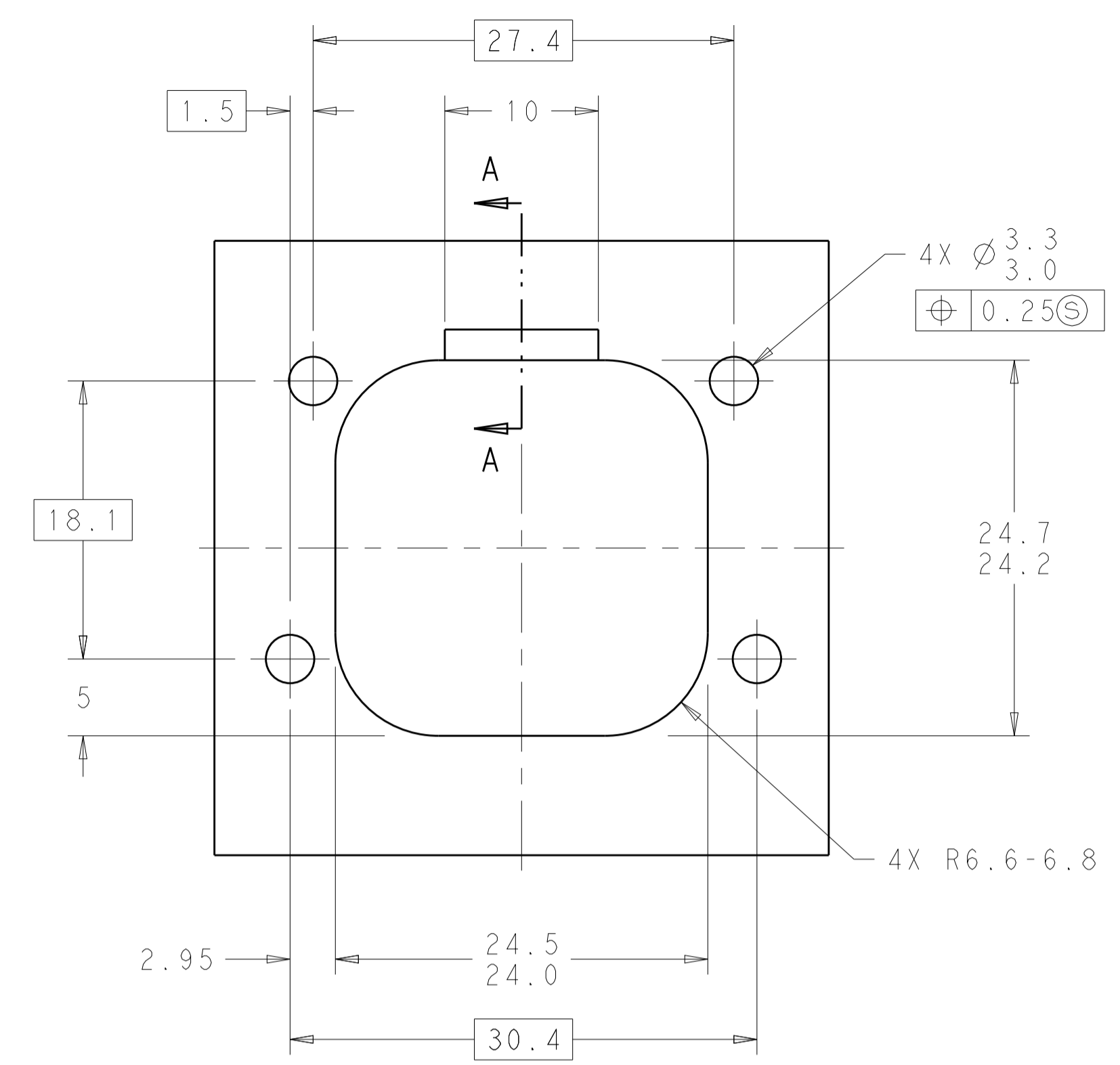


776276-1 & 1-776276-1 SHOWN

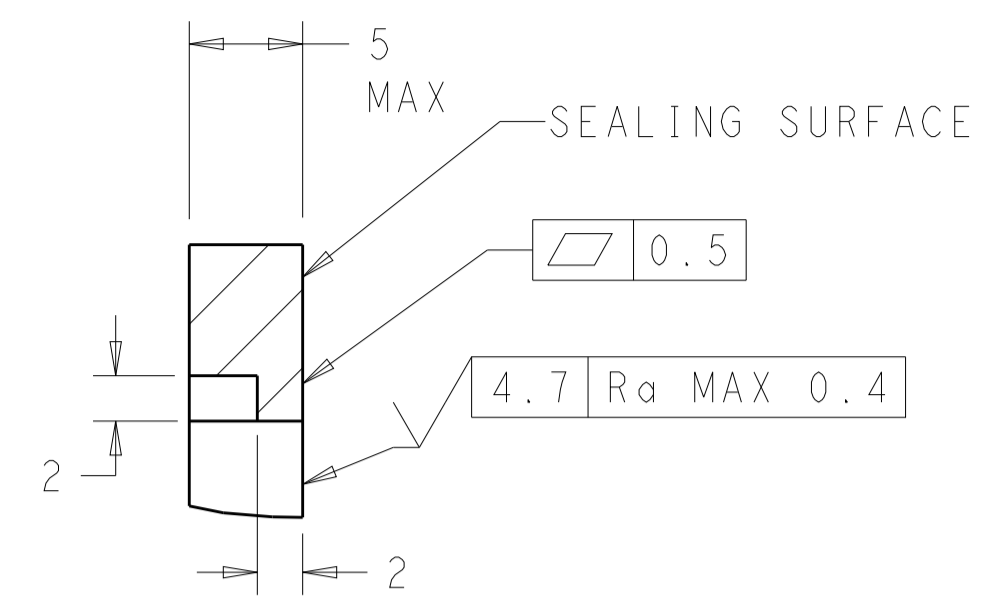
| | | |
|--------------|----------|-------------|
| NATURAL | DURAGOLD | 1-776276-2 |
| BLACK | DURAGOLD | 1-776276-1 |
| NATURAL | TIN | 776276-2 |
| BLACK | TIN | 776276-1 |
| HEADER COLOR | PLATING | PART NUMBER |

| | | | |
|--|--|--|---|
| THIS DRAWING IS A CONTROLLED DOCUMENT. | | DWN: D. STRAUSSER 21 JAN 2010 CHK: D. STRAUSSER 22 MAR 2010 APVD: D. STRAUSSER 27 APR 2010 | TE Connectivity NAME: ASSEMBLY, HEADER 8 POSITION VERTICAL, AMPSEAL WITH FLANGE SEAL |
| DIMENSIONS: mm | TOLERANCES UNLESS OTHERWISE SPECIFIED: 0 PLC ± 1 PLC ±0.2 2 PLC ±0.13 3 PLC ± 4 PLC ± ANGLES ±1° FINISH | PRODUCT SPEC: 108-1329 APPLICATION SPEC: 114-16016 WEIGHT: - CUSTOMER DRAWING | |
| MATERIAL: | | SIZE: A1 CAGE CODE: 00779 DRAWING NO: 776276 SCALE: 4:1 SHEET 1 OF 2 REV: B7 | RESTRICTED TO |

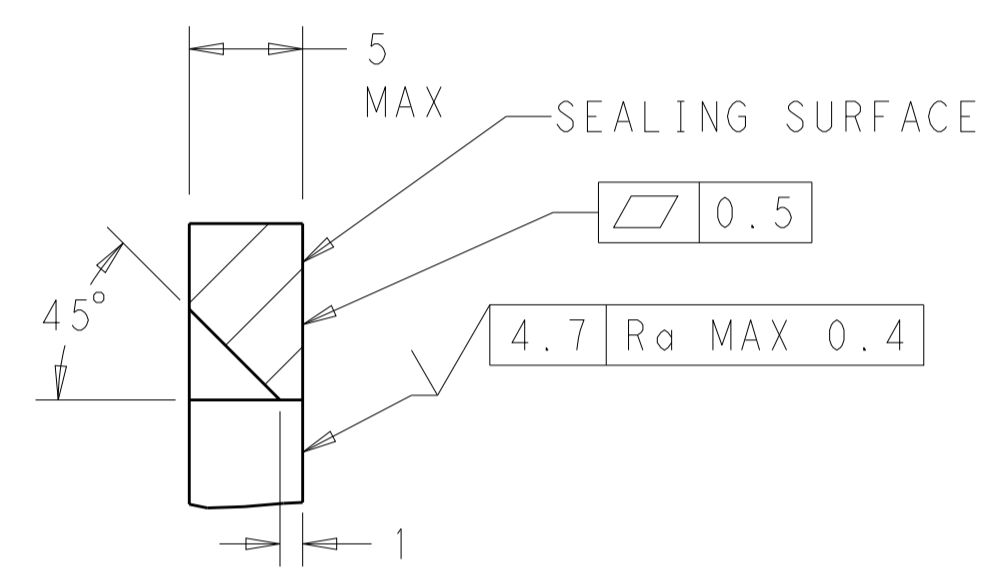
| REVISIONS | | | | |
|-----------|------|-------------|------|-------|
| P. | LTN. | DESCRIPTION | DATE | APVD. |
| - | - | SEE SHEET 1 | - | - |
| | | | | |
| | | | | |



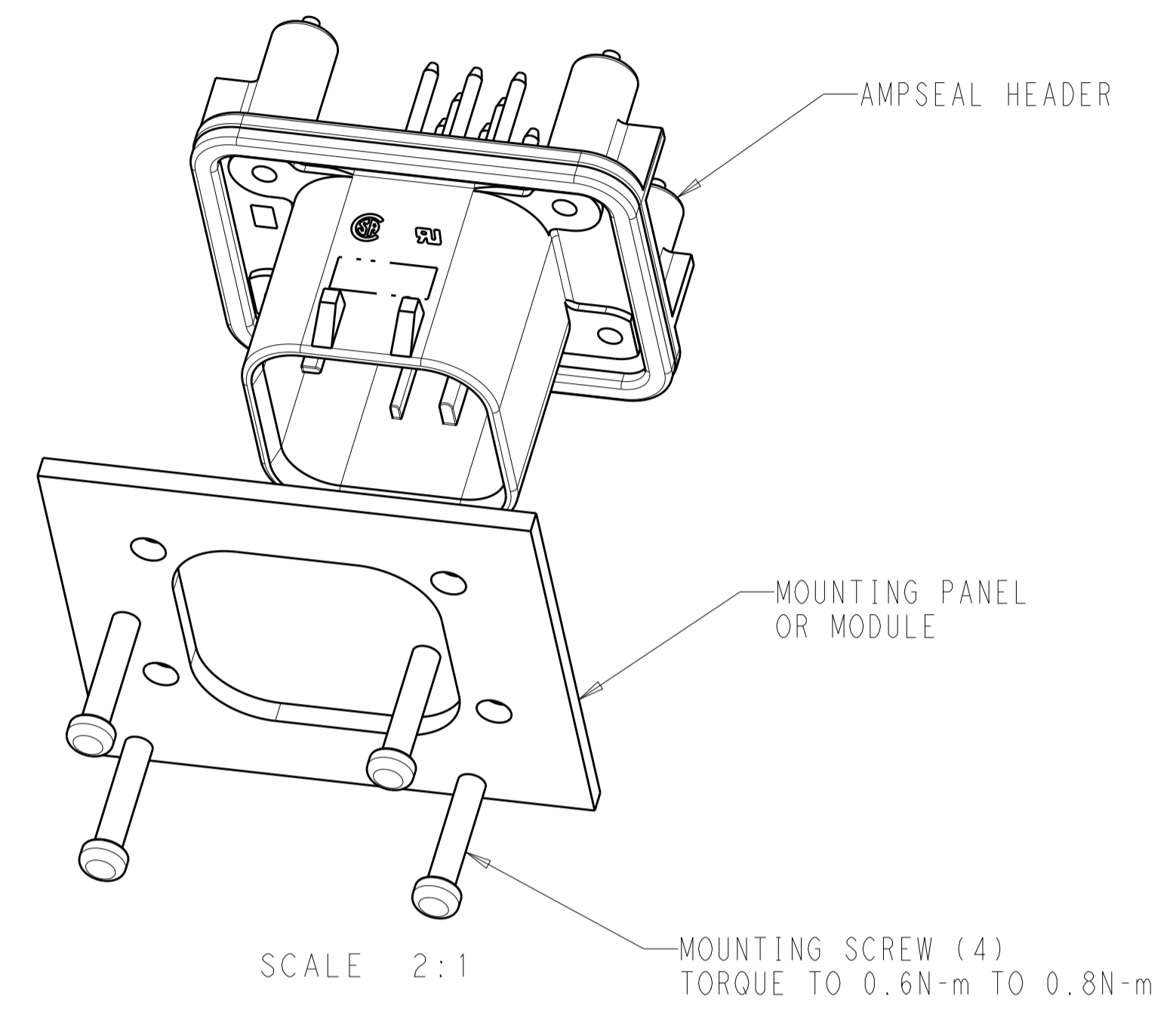
RECOMMENDED MOUNTING HOLE LAYOUT FOR 5.0 MAX THICK PANEL



SECTION A-A
OPTIONAL CONSTRUCTION IF PANEL THICKNESS IS GREATER THAN 2.0

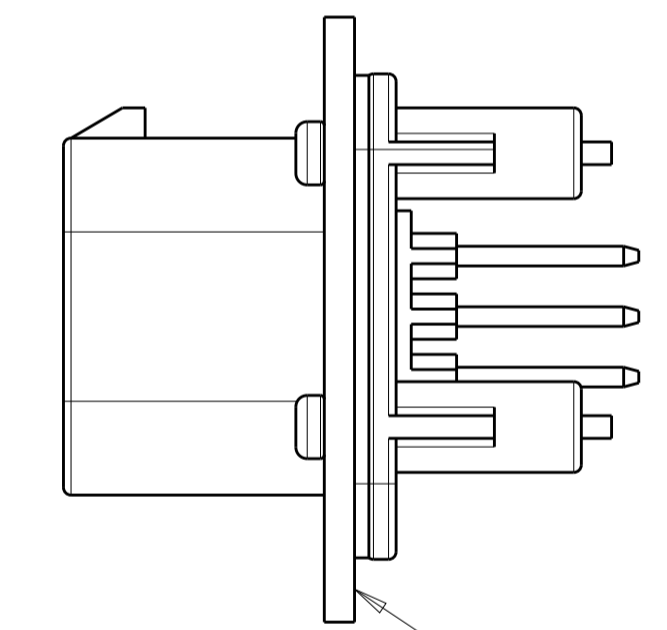


SECTION A-A
OPTIONAL CONSTRUCTION IF PANEL THICKNESS IS GREATER THAN 2.0



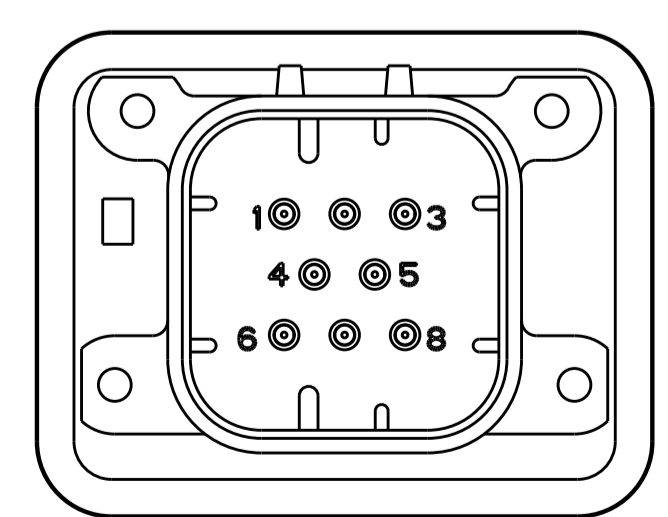
SCALE 2:1

MOUNTING SCREW (4)
TORQUE TO 0.6N-m TO 0.8N-m

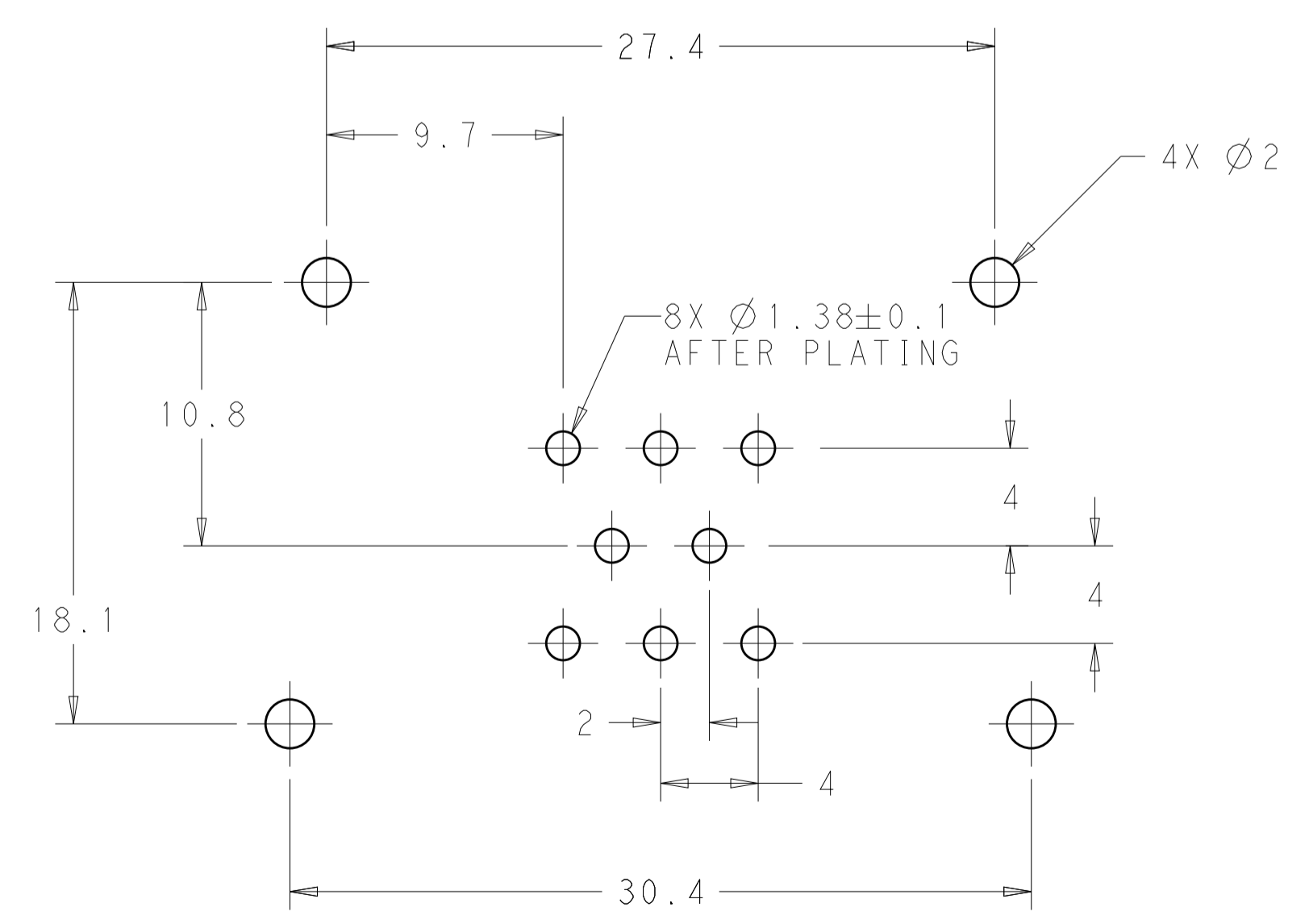


SCALE 2:1

ENSURE THE HEADER IS FLUSH TO THE PANEL FACE ALL AROUND BEFORE TIGHTENING TO FINAL TORQUE



776276-2 & 1-776276-2
KEY LOCATION
SCALE 2:1



RECOMMENDED P.C. BOARD LAYOUT FOR 1.57 THICK P.C. BOARD

| | | | | |
|--|--|--|---|------------------------|
| THIS DRAWING IS A CONTROLLED DOCUMENT. | | DWN: D. STRAUSSER 21 JAN 2010 CHK: D. STRAUSSER 22 MAR 2010 APVD: D. STRAUSSER 27 APR 2010 | TE Connectivity | |
| DIMENSIONS: | TOLERANCES UNLESS OTHERWISE SPECIFIED: | 0 PLC ± 1 PLC ±0.2 2 PLC ±0.13 3 PLC ± 4 PLC ± ANGLES ±1° | NAME: ASSEMBLY, HEADER 8 POSITION VERTICAL, AMPSEAL WITH FLANGE SEAL | RESTRICTED TO |
| mm | | PRODUCT SPEC: 108-1329 APPLICATION SPEC: 114-16016 WEIGHT: - | SIZE: A1 CAGE CODE: 776276 | SHEET 2 OF 2 REV B7 |
| MATERIAL: | FINISH: | CUSTOMER DRAWING | SCALE 4:1 | |