

To : 中山大谷  
Attn : 舒先生  
Model No. : TF10-10280-38 ROHS  
Ref. No. :  
Prepared By :  
Date : 7-11-07

## 1. SCOPE

- a. This specification applies to TECO TF10-10280-38 ROHS motor to be supplied to you.
- b. In case the motor performance and/or life is questionable, tests and judgment are to be made based on this specification.
- c. Please note that it is your responsibility to ensure that the motor can satisfy the requirements of your application.
- d. After having acknowledged the receipt of this specification, please give it back to us within one month after the date of issuance thereof. If you fail to return to us within the term here in above, we regard it as the receipt of this specification acknowledged.

**2. STANDARD OPERATING CONDITIONS**

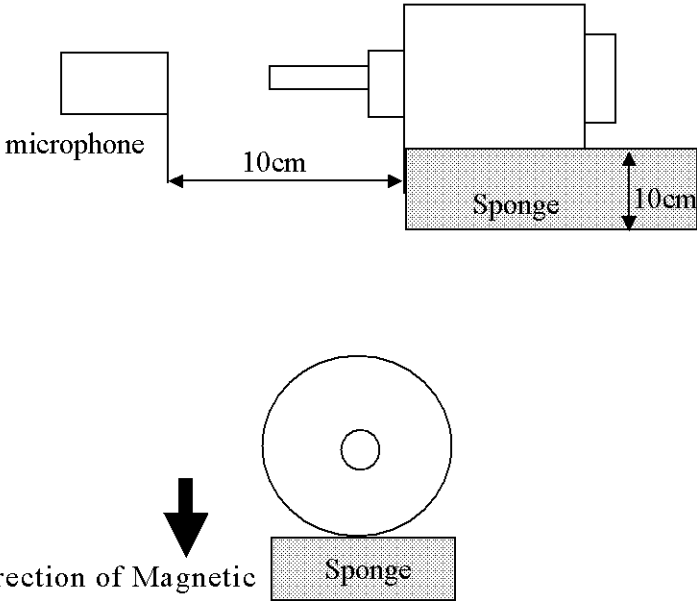
ITEM	SPECIFICATION
a. Rated Voltage	DC 3.0VDC
b. Operating Voltage range	DC 2V~3.0VDC
c. No Load Current	70mA (MAX)
d. No Load Speed	4594±10%RPM
e. Stall Current	310mA (MAX)
f. Operating Environment	1. Working temperature: -5°C and +40°C Working humidity: 15%~90% RH
g. Storage Environment	1. Storage temperature: -30°C and +70°C 2. Storage humidity: 10%~90% RH (No condensation of moisture)

**D MEASURING CONDITION**

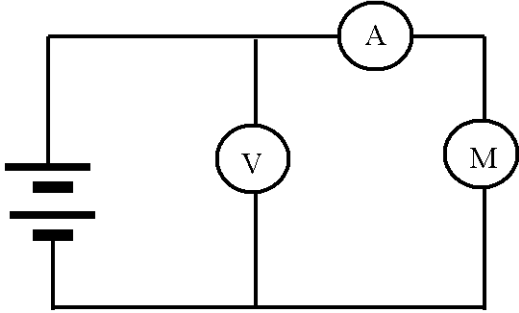
ITEM	SPECIFICATION
a. Temperature	20±2°C
b. Humidity	65±5%RH
c. Motor Position	Shaft Horizontal

ALL DATA ARE BASED ON THE MEASUREMENT UNDER THE TEMPERATURE OF 25°C AND HUMIDITY 65%RH. HOWEVER, IT IS ALSO APPLICABLE AT THE RANGES OF TEMPERATURE 10~35°C AND HUMIDITY 30~95% RH.

## 4. MECHANICAL SPECIFICATION

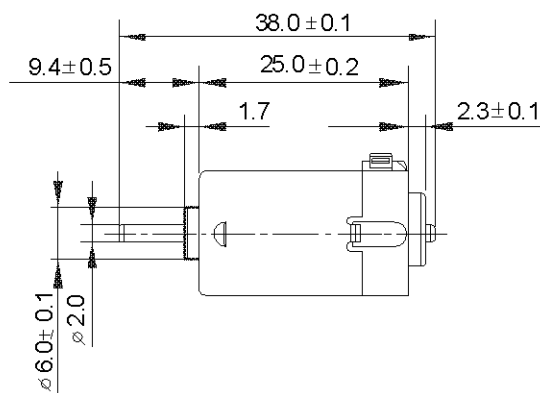
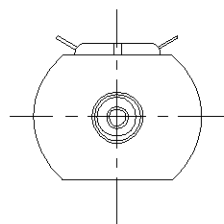
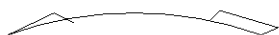
ITEM	SPECIFICATION
a. Shaft end play	0.02mm~0. 5mm
b. Shaft vibration	Below 0.03mm
c. Mechanical noise	68dB (max) with the following condition
	<p data-bbox="541 599 1448 730">No load rated voltage, motor horizontally held, measured by JIS-A (RMS) at 10cm away from metal housing on protruded shaft side. Motor should be put on the sponge as shown with the arrow downward, Background noise: 26dB</p>  <p data-bbox="541 1331 937 1404">Direction of Magnetic Force attracting the armature</p>

**5. ELECTRICAL CHARACTERISTICS**

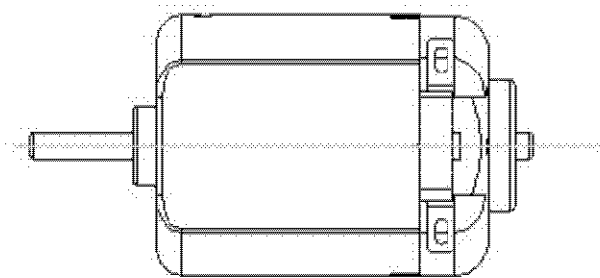
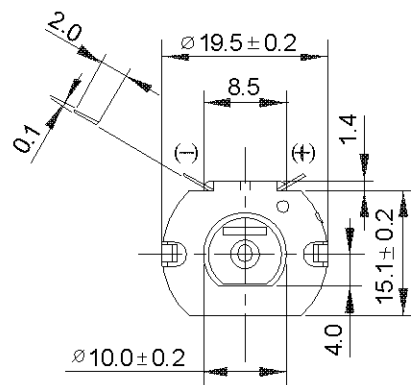
ITEM	SPECIFICATION
a. Rate Voltage	3.0V DC
b. No Load Speed	4594±10%RPM
c. No Load Current	70 (MAX)
d. Stall Current	310 (MAX)
e. Insulation Resistance	1MΩ Min (DC 100V)
f. Testing Circuit	Testing circuit operated at 3.0V, 0Ω 

## Mechanical Dimension TF10-10280-38 ROHS

DIRECTION OF ROTATION



UNIT:MILLIMETRES



無方孔外殼

To : 中山大谷  
Attn : 黃先生  
Model No. : TFK280SC-21138-45  
Ref. No. :  
Prepared By :  
Date : 7-12-06

## 1. SCOPE

- a. This specification applies to TECO TFK280SC-21138-45 motor to be supplied to you.
- b. In case the motor performance and/or life is questionable, tests and judgment are to be made based on this specification.
- c. Please note that it is your responsibility to ensure that the motor can satisfy the requirements of your application.
- d. After having acknowledged the receipt of this specification, please give it back to us within one month after the date of issuance thereof. If you fail to return to us within the term here in above, we regard it as the receipt of this specification acknowledged.

## 2. STANDARD OPERATING CONDITIONS

ITEM	SPECIFICATION
a. Rated Voltage	DC 7.2VDC
b. Operating Voltage range	DC 5V~7.5VDC
c. No Load Current	Below 160mA
d. No Load Speed	8804±10%RPM
e. Operating Environment	1. Working temperature: -30°C and +40°C Working humidity: 15%~90% RH
f. Storage Environment	1. Storage temperature: -30°C and +70°C 2. Storage humidity: 10%~90% RH (No condensation of moisture)

## 3. MEASURING CONDITION

ITEM	SPECIFICATION
a. Temperature	20±2°C
b. Humidity	65±5%RH
c. Motor Position	Shaft Horizontal

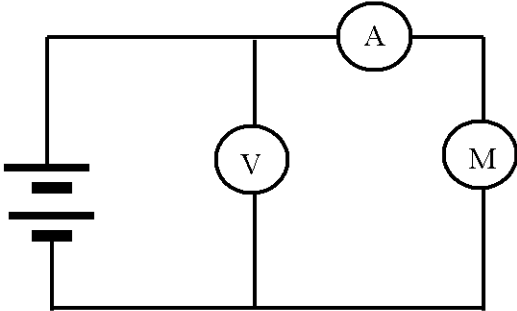
ALL DATA ARE BASED ON THE MEASUREMENT UNDER THE TEMPERATURE OF 25°C AND HUMIDITY 65%RH. HOWEVER, IT IS ALSO APPLICABLE AT THE RANGES OF TEMPERATURE 10~35°C AND HUMIDITY 30~95% RH.

## 4. MECHANICAL SPECIFICATION

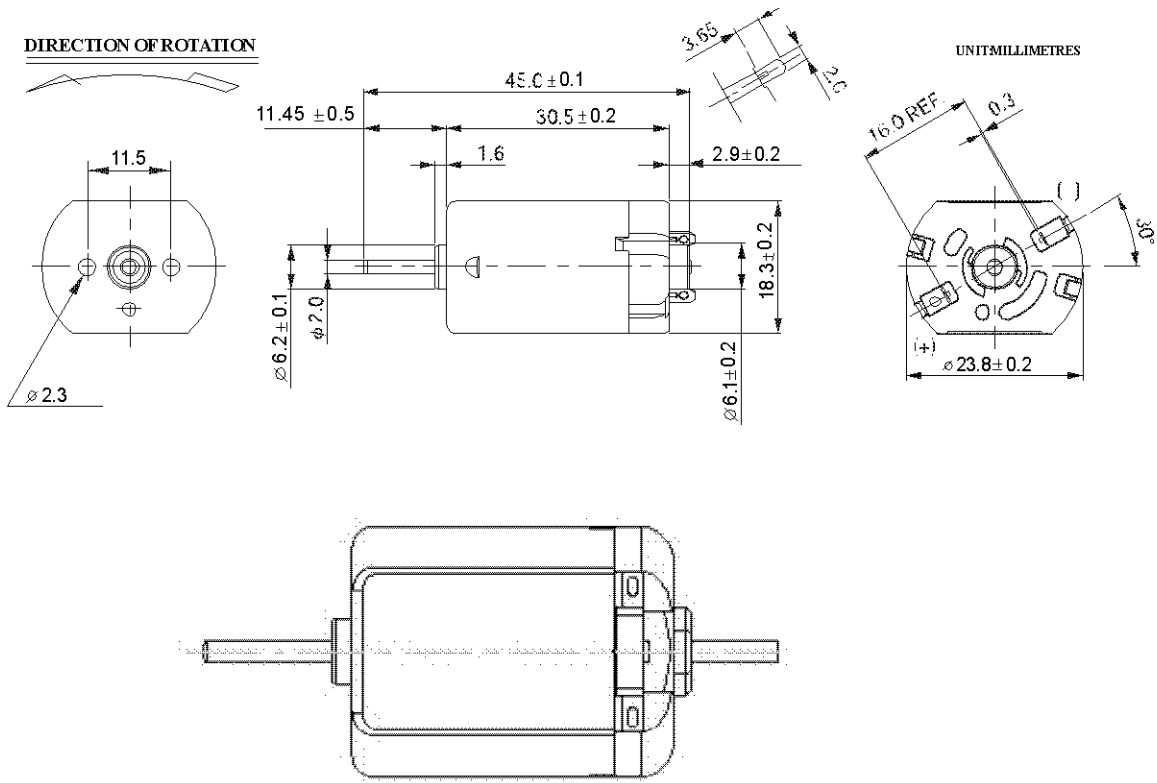
ITEM	SPECIFICATION
a. Shaft end play	0.02mm~0. 5mm
b. Shaft vibration	Below 0.03mm
c. Mechanical noise	68dB (max) with the following condition
	<p data-bbox="538 490 1448 630">No load rated voltage, motor horizontally held, measured by JIS-A (RMS) at 10cm away from metal housing on protruded shaft side. Motor should be put on the sponge as shown with the arrow downward, Background noise: 26dB</p> <div data-bbox="586 672 1285 902" style="text-align: center;"> <p>The diagram illustrates the measurement setup. A microphone is placed to the left of a motor. A horizontal double-headed arrow between the microphone and the motor's shaft indicates a distance of 10cm. The motor is supported from below by a rectangular sponge. A vertical double-headed arrow next to the sponge indicates its height is 10cm.</p> </div> <div data-bbox="538 1026 1040 1312" style="text-align: center;"> <p>The diagram shows a circular armature above a rectangular sponge. A thick black arrow points vertically downwards from the armature towards the sponge. Below the arrow, the text reads: "Direction of Magnetic Force attracting the armature".</p> </div>



## 5. ELECTRICAL CHARACTERISTICS

ITEM	SPECIFICATION
a. Rate Voltage	7.2V DC
b. No Load Speed	8804±10%RPM
c. No Load Current	Below 160mA
d. Insulation Resistance	1MΩ Min (DC 100V)
e. Testing Circuit	<p data-bbox="577 565 1069 597">Testing circuit operated at 7.2V, 0Ω</p>  <p>The diagram illustrates a series circuit for testing the motor. On the left, a DC power source is represented by a battery symbol. The circuit then splits into two parallel branches. The first branch contains a voltmeter (V) connected in parallel across the motor. The second branch contains an ammeter (A) and the motor (M) connected in series. The circuit then recombines and returns to the power source.</p>

## Mechanical Dimension TFK280SC-21138-45



無方孔外殼