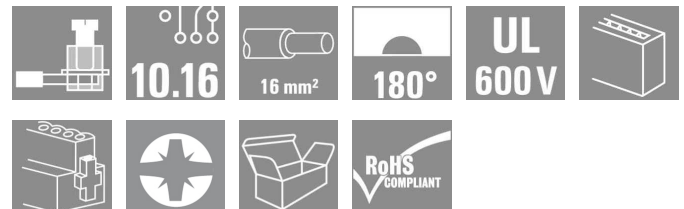


OMNIMATE Power - series BU/SU 10.16IT BUZ 10.16IT/03/180MF2 AG BK BX

Weidmüller Interface GmbH & Co. KG
 Klingenbergstraße 16
 D-32758 Detmold
 Germany
 Fon: +49 5231 14-0
 Fax: +49 5231 14-292083
 www.weidmueller.com



180° female plug in 10.16 pitch for IT systems. Fulfils the requirements of UL1059 600 V Class C, when used with a SU 10.16 IT pin header with leading PE contact. Fulfils the expanded requirements for 5.5 mm of touch protection with IT systems (400 V relative to earth), according to IEC 61800-5-1.

The middle flange interlocks automatically and is optionally available with screw connection. It decreases the space required by one pitch width when compared to other standard solutions.

Available optionally without middle flange interlock.

- 0.2 - 16.0 mm² (IEC) / 28 - 12 AWG (UL)
- 1000 V (IEC) / 600 V (UL)
- 76 A (IEC) / 54 A (UL)

General ordering data

| | |
|--------------|-----------------------------------------------------------------------------------------------------------------------------------------------------------------|
| Type | BUZ 10.16IT/03/180MF2 AG BK BX |
| Order No. | 1156610000 |
| Version | PCB plug-in connector, female plug, 10.16 mm, No. of poles: 3, 180°, Clamping yoke connection, Clamping range, rated connection, max.: 16 mm ² , Box |
| GTIN (EAN) | 4032248943586 |
| Qty. | 21 pc(s). |
| Product data | IEC: 1000 V / 78 A / 0.2 - 16 mm ² UL: 300 V / 54 A / AWG 22 - AWG 6 |
| Packaging | Box |

Erstellungs-Datum December 17, 2013 12:48:30 PM CET

OMNIMATE Power - series BU/SU 10.16IT BUZ 10.16IT/03/180MF2 AG BK BX

Weidmüller Interface GmbH & Co. KG
Klingenbergstraße 16
D-32758 Detmold
Germany
Fon: +49 5231 14-0
Fax: +49 5231 14-292083
www.weidmueller.com

Technische Daten

Dimensions and weights

Net weight 44.256 g

System parameters

| | | | |
|--------------------------------------------|---------------------------------------|----------------------------------------------|--------------------------|
| Product family | OMNIMATE Power - series BU/SU 10.16IT | Wire connection method | Clamping yoke connection |
| Conductor outlet direction | 180° | Pitch in mm (P) | 10.16 mm |
| Pitch in inches (P) | 0.4 inch | No. of poles | 3 |
| Screwdriver blade | 1.0 x 5.5 | Screwdriver blade standard | DIN 5264 |
| Tightening torque, min. | 1.2 Nm | Tightening torque, max. | 1.5 Nm |
| Clamping screw | M 4 | Stripping length | 12 mm |
| L1 in mm | 30.48 mm | L1 in inches | 1.2 inch |
| Touch-safe protection acc. to DIN VDE 0470 | IP 20 | Touch-safe protection acc. to DIN VDE 57 106 | Safe from finger touch |

Material data

| | | | |
|------------------------|---------------|---------------------------|--------|
| Insulating material | PA GF | Colour | Black |
| Colour chart (similar) | RAL 9011 | UL 94 flammability rating | V-0 |
| CTI | ≥ 600 | Contact material | Cu-Leg |
| Contact surface | silver-plated | | |

Connectable conductors

| | | | |
|-------------------------------------------------|---------------------|-------------------------------------------------|----------------------|
| Clamping range, rated connection, min. | 0.2 mm ² | Clamping range, rated connection, max. | 16 mm ² |
| Wire connection cross section AWG, min. | AWG 22 | Wire connection cross section AWG, max. | AWG 6 |
| Solid, min. H05(07) V-U | 0.2 mm ² | Solid, max. H05(07) V-U | 16 mm ² |
| Stranded, min. H07V-R | 6 mm ² | Stranded, min. H07V-R | 6 mm ² |
| Stranded, max. H07V-R | 16 mm ² | Flexible, min. H05(07) V-K | 0.5 mm ² |
| Flexible, max. H05(07) V-K | 16 mm ² | w. wire end ferrule, DIN 46228 pt 1, min. | 0.25 mm ² |
| w. wire end ferrule, DIN 46228 pt 1, max. | 16 mm ² | w. plastic collar ferrule, DIN 46228 pt 4, min. | 0.25 mm ² |
| w. plastic collar ferrule, DIN 46228 pt 4, max. | 10 mm ² | Plug gauge acc. to EN 60999 a x b; Ø | 5.3mm (B6) |

DIN IEC rating data

| | | | |
|----------------------------------------------------------------------|-------------------|--------------------------------------------------------------------------|---------|
| Rated current, min. no. of poles (Tu=20°C) | 78 A | Rated current, max. no. of poles (Tu=20°C) | 68 A |
| Rated current, number of poles (Tu=40°C), min | 72 A | Rated current, number of poles (Tu=40°C), max. | 61 A |
| Rated voltage for surge voltage class pollution degree II/2 | 1,000 V | Rated voltage for surge voltage class pollution degree III/2 | 1,000 V |
| Rated voltage for surge voltage class pollution degree III/3 | 1,000 V | Rated impulse voltage for surge voltage class pollution degree II/2 | 6 kV |
| Rated impulse voltage for surge voltage class pollution degree III/2 | 8 kV | Rated impulse voltage for surge voltage class contamination degree III/3 | 8 kV |
| Short-time withstand current resistance | 3 x 1s mit 1000 A | | |

OMNIMATE Power - series BU/SU 10.16IT BUZ 10.16IT/03/180MF2 AG BK BX

Weidmüller Interface GmbH & Co. KG
 Klingenbergstraße 16
 D-32758 Detmold
 Germany
 Fon: +49 5231 14-0
 Fax: +49 5231 14-292083
 www.weidmueller.com

Technische Daten

CSA rating data

Institute (CSA)



Rated voltage (Use group B)

300 V

| | |
|-------------------------------|-------|
| Rated current (use group B) | 54 A |
| Rated current (use group C) | 54 A |
| Rated current (use group D) | 5 A |
| Wire cross-section, AWG, max. | AWG 6 |

| | |
|-------------------------------|--------|
| Rated voltage (Use group C) | 600 V |
| Rated voltage (use group D) | 600 V |
| Wire cross-section, AWG, min. | AWG 22 |

UL 1059 rating data

| | | | |
|-------------------------------|--------|-------------------------------|-------|
| Rated voltage (use group B) | 300 V | Rated current (use group B) | 54 A |
| Rated voltage (use group C) | 600 V | Rated current (use group C) | 54 A |
| Rated voltage (use group D) | 600 V | Rated current (use group D) | 5 A |
| Wire cross-section, AWG, min. | AWG 22 | Wire cross-section, AWG, max. | AWG 6 |

Classifications

| | | | |
|------------|-------------|------------|-------------|
| ETIM 3.0 | EC001284 | eClass 6.2 | 27-26-07-04 |
| eClass 7.1 | 27-44-04-02 | | |

Notes

Notes

- Additional colours on request
- Rated current related to rated cross-section & min. No. of poles.
- Wire end ferrule with plastic collar to DIN 46228/4
- Wire end ferrule without plastic collar to DIN 46228/1
- P on drawing = pitch
- Rated data refer only to the component itself. Clearance and creepage distances to other components are to be designed in accordance with the relevant application standards.
- MFX and MSFX: X= Position of the middle flange e.g. MF2, MSF3

Approvals

Approvals

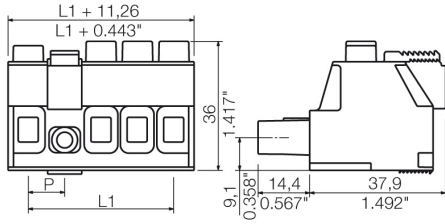


ROHS Conform

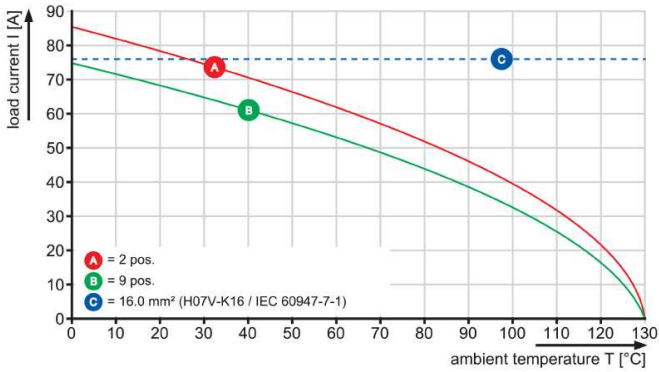
**OMNIMATE Power - series BU/SU 10.16IT
BUZ 10.16IT/03/180MF2 AG BK BX**

Weidmüller Interface GmbH & Co. KG
Klingenbergstraße 16
D-32758 Detmold
Germany
Fon: +49 5231 14-0
Fax: +49 5231 14-292083
www.weidmueller.com

Zeichnungen



BUZ 10.16HP/./180 - SU 10.16HP/./180



BUZ 10.16HP/./180 - SU 10.16HP/./180

