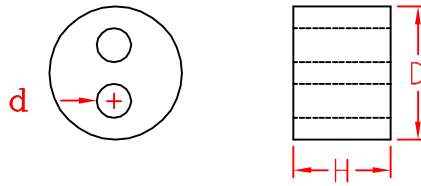


MH-2 TYPE



ITEM NO.	D	d	H
MH9-2A	9±0.5	3.1±0.25	7.3±0.25
MH11-2A	11±0.5	3.1±0.25	8.0±0.25
MH14-2A	14±0.5	2.6±0.25	9.2±0.25
MH14-2B	14±0.5	3.1±0.25	9.2±0.25
MH14-2C	14±0.5	4.1±0.25	9.2±0.25
MH16-2A	16±0.5	5.2±0.25	8.4±0.25
MH18-2A	17.5±0.5	2.6±0.25	9.0±0.25
MH18-2B	17.5±0.5	3.0±0.25	9.0±0.25
MH18-2C	17.5±0.5	3.5±0.25	9.0±0.25
MH18-2D	17.5±0.5	4.1±0.25	9.0±0.25
MH18-2E	17.5±0.5	4.3±0.25	9.0±0.25
MH18-2F	17.5±0.5	5.2±0.25	9.0±0.25
MH18-2G	17.5±0.5	6.1±0.25	9.0±0.25
MH23-2A	22.8±0.5	3.5±0.25	11.2±0.35
MH23-2B	22.8±0.5	4.3±0.25	11.2±0.35
MH23-2C	22.8±0.5	5.1±0.25	11.2±0.35
MH23-2D	22.8±0.5	6.1±0.25	11.2±0.35
MH23-2E	22.8±0.5	6.5±0.25	11.2±0.35
MH23-2F	22.8±0.5	8.7±0.25	11.2±0.35
MH30-2A	30.4±1.0	5.2±0.25	14.4±0.35
MH30-2B	30.4±1.0	6.5±0.25	14.4±0.35
MH30-2C	30.4±1.0	8.7±0.25	14.4±0.35
MH30-2D	30.4±1.0	10±0.35	14.4±0.35
MH39-2A	39.0±1.0	9.0±0.25	17.3±0.35
MH39-2B	39.0±1.0	13±0.35	17.3±0.35
MH42-2A	41.8±1.0	9.0±0.25	17.0±0.35
MH42-2B	41.8±1.0	13±0.35	17.0±0.35

		MATERIAL	ITEM NO.
		TPE	MH-2 TYPE
SCALE		FINISH	NAME Multi-Hole Seal (2 HOLES)
△ (. .)	TOLERANCE AS FIGURE	△ 04-20-2012 DATE	REVISIONS K001
			R.NO.

