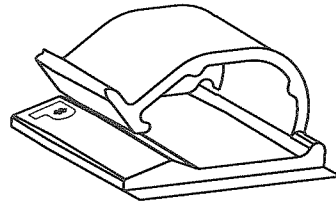
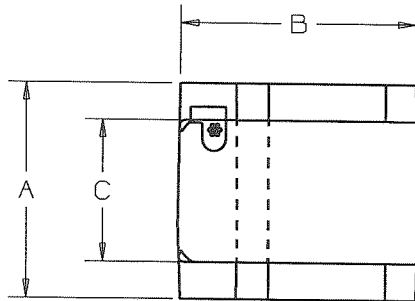


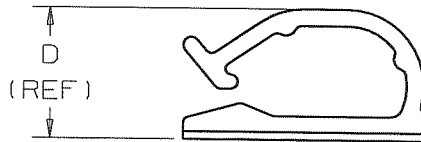
THIS COPY IS PROVIDED ON A RESTRICTED BASIS AND IS NOT TO BE USED IN ANY WAY DETRIMENTAL TO THE INTERESTS OF PANDUIT CORPORATION.

PANDUIT PART NUMBER	DIMENSIONS				MAXIMUM CABLE DIA. in. (mm)	ADHESIVE BACKING	WEIGHT lbs/100 pcs (g)/100 pcs
	A	B	C	D			
ACC62-A	1.12	1.24	.73	0.65	0.62 (15.7)	RUBBER	0.96 (437)
ACC62-AT	(28.5)	(31.4)	(18.5)	(16.5) (REF)			



NOTES:

- SEE CURRENT PRICE SHEET FOR PART NUMBER SUFFIX DESIGNATION FOR PACKAGE SIZE.



CAD FILENAME/LAYERS  
G03597BD\_DC\_GB0239BB/00B

**PANDUIT** CORP.

TINLEY PARK, ILLINOIS

ACC62-\_\_  
ADHESIVE CORD CLIP

REV	DATE	BY	CHK	DESCRIPTION	ECN	R	CUST	SUP
00B	7/9/08	DJSM		REVISED AND RE-RELEASED TO TEAMCENTER REV HISTORY; TABULARIZED DIMS; REMOVED .86 AND .49 DIMS; REVISED .63 DIM TO INCLUDE TAPE; .73 WAS .74; REMOVED TAPE, APPLICATION, AND WARRANTY NOTES	GB0239BB	00B	KLN	
3	7/18/00	JAD		DIMENSIONS, .63, .86, & .49 WERE CHANGED TO REF DIMENSIONS	GB0239BB	3		

UNLESS OTHERWISE SPECIFIED, DIMENSIONAL TOLERANCES ARE:  
(.X) ±0.05 (1.3) (.XXX) ±0.010 (0.25)  
(.XX) ±0.02 (.5) ANGLES ±5°

UNLESS OTHERWISE SPECIFIED, ALL DIMENSIONS ARE GIVEN IN INCHES, THIRD ANGLE PROJECTION

DRAWN BY  
JRL

MAT'L:

SCALE  
FULL

DATE  
9-11-92

NYLON 6/6  
COLOR: NATURAL

DRAWING NO.  
GB0239BB

DWG  
SIZE  
A

CHK'D  
KLN