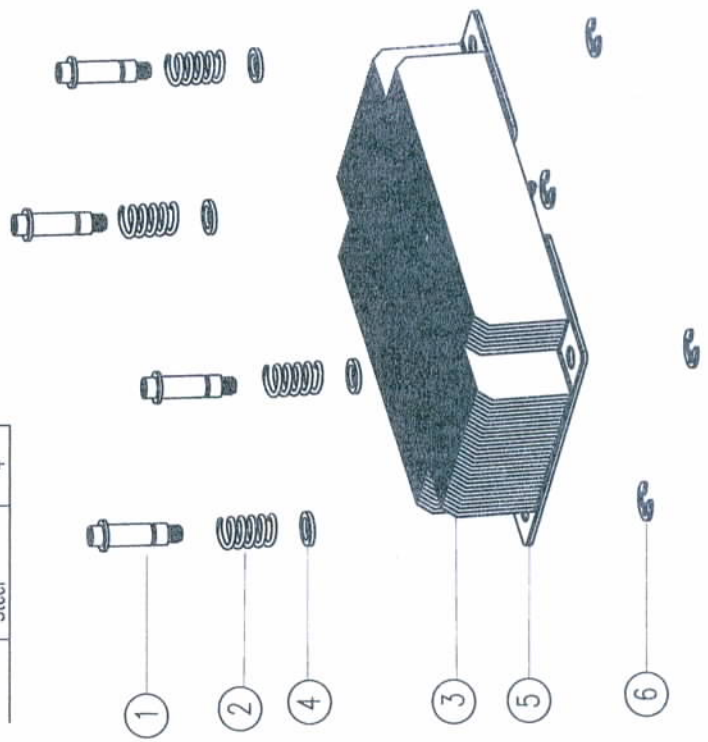
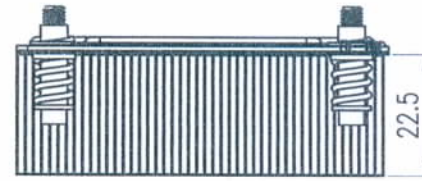
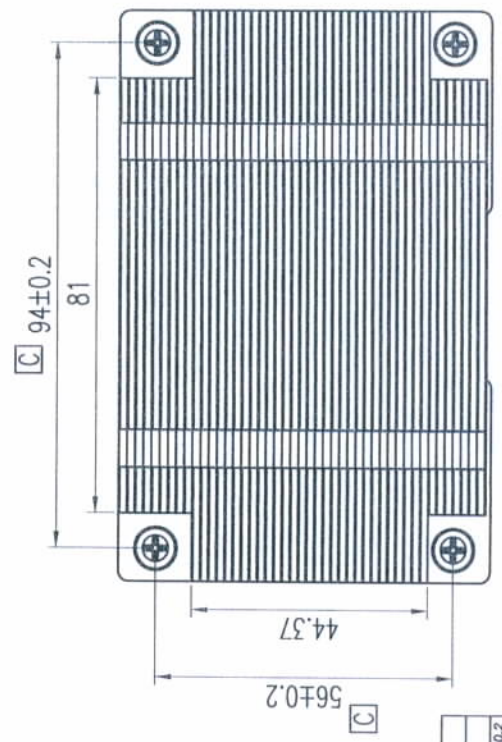
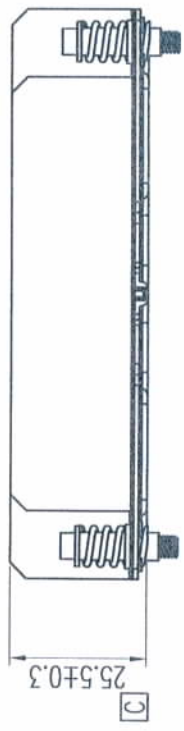
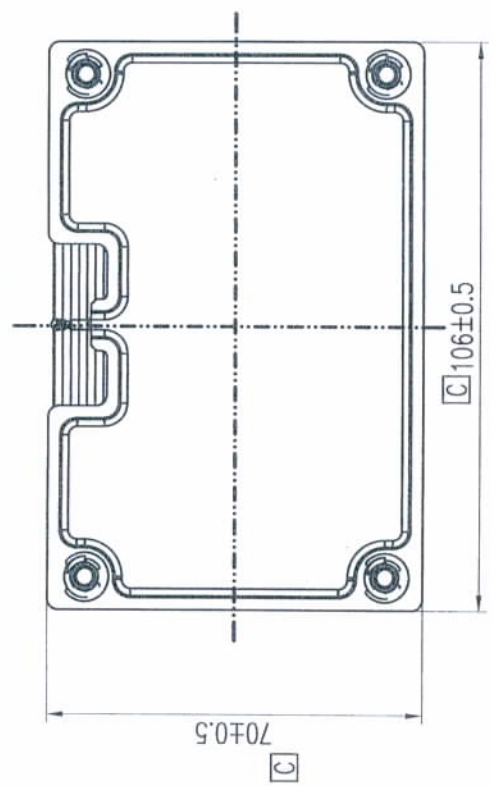


Rev	Date	Description
A	2012.02.01	FIRST ISSUE

No.	Name	Material	Qty.
1		Steel	4
2		JIS G3522	4
3		Steel	4
4		Cu	1
5		Cu	1
6		Steel	4



NOTE:
 1.No burrs allowed.
 2.Critical dimension with "C" must follow SPEC.

LIMITS UNLESS AS FOLLOW:

TOL ±	0-6	6-30	30-80
0-6	0.1	0.15	0.2
6-30	0.15	0.2	0.25
30-80	0.2	0.25	0.3