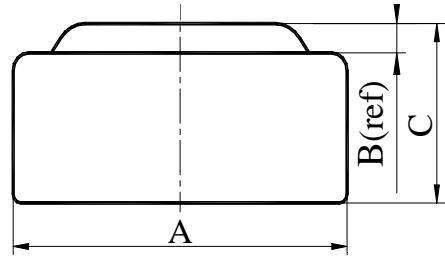
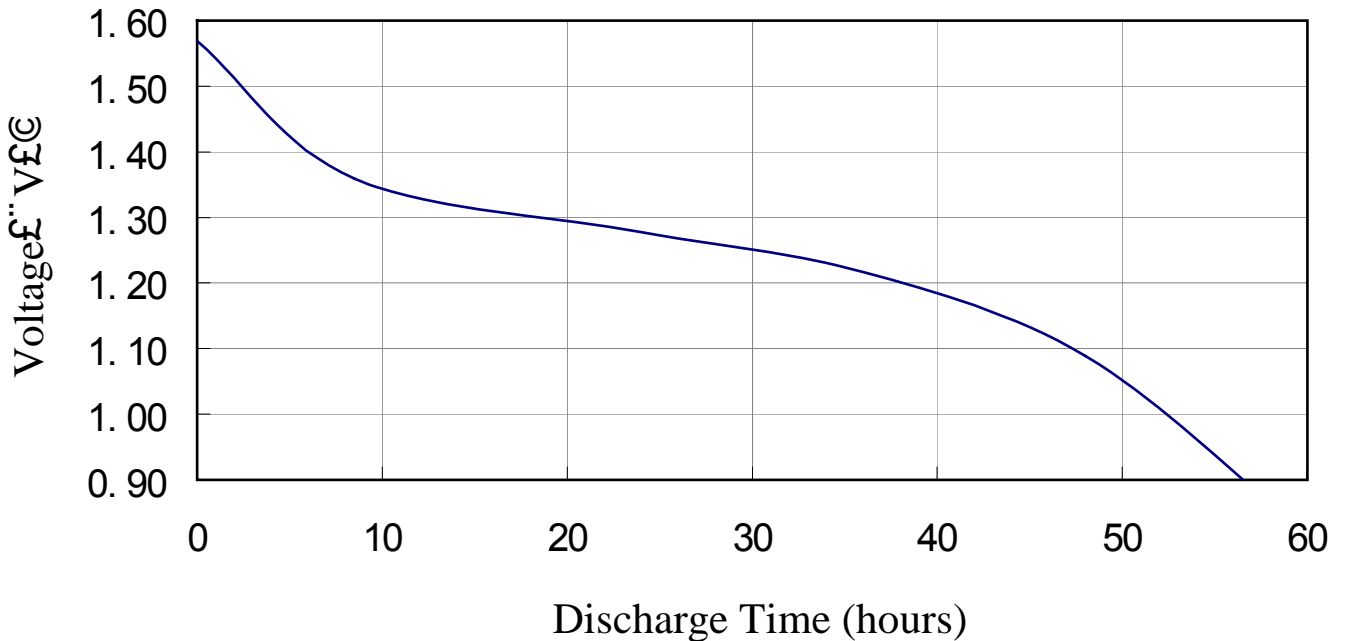


Chemical System : Alkaline manganese button batteries
Model No. : LR1130 (LR54 AG10 189)
Nominal Dimensions: $\Phi 11.60 \times 3.10 \text{mm}$
Nominal Voltage : 1.50V
Average Weight : 1.11g
Applications : Watch, Calculator,
 Electronic toy, etc.
Shelf Life : Not less than 90% of the
 service capacity, following
 1st year storage at 20°C.
Loading : 1000Ω(20°C)
Cut Off Voltage : 0.90V
Capacity : 72mAh



Dimensions	Unit: mm
A	11.40----11.60
B	0.40(ref)
C	2.90----3.10

Typical Discharge Characteristics at 20





日權電池有限公司

DAILY POWER BATTERIES LIMITED

九龍觀塘巧明街110號興運工業大廈9樓A座

Flat A, 9/F., Hing Win Factory Building, 110 How Ming Street, Kowloon, Hong Kong

Tel : (852) 2343 0818, 2345 7765, 2688 0757 Fax : (852) 2341 9839

Battery Testers DPB-860

Technical Parameter



Battery Types supported

Nominal Voltage Battery Types Loaded Resistance Operating Current

1.5V UM1.D

UM2.C

UM3.AA

UM4.AAA

UM5.

Small Button Cells 10 Ω 150 mA

9V 6F22 215 Ω 40 mA

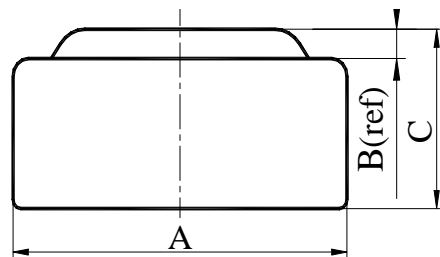
Indication

(good) - (weak) - (replace)

Testing conditions 0 ~ 40 , 25 % ~ 80 % RH

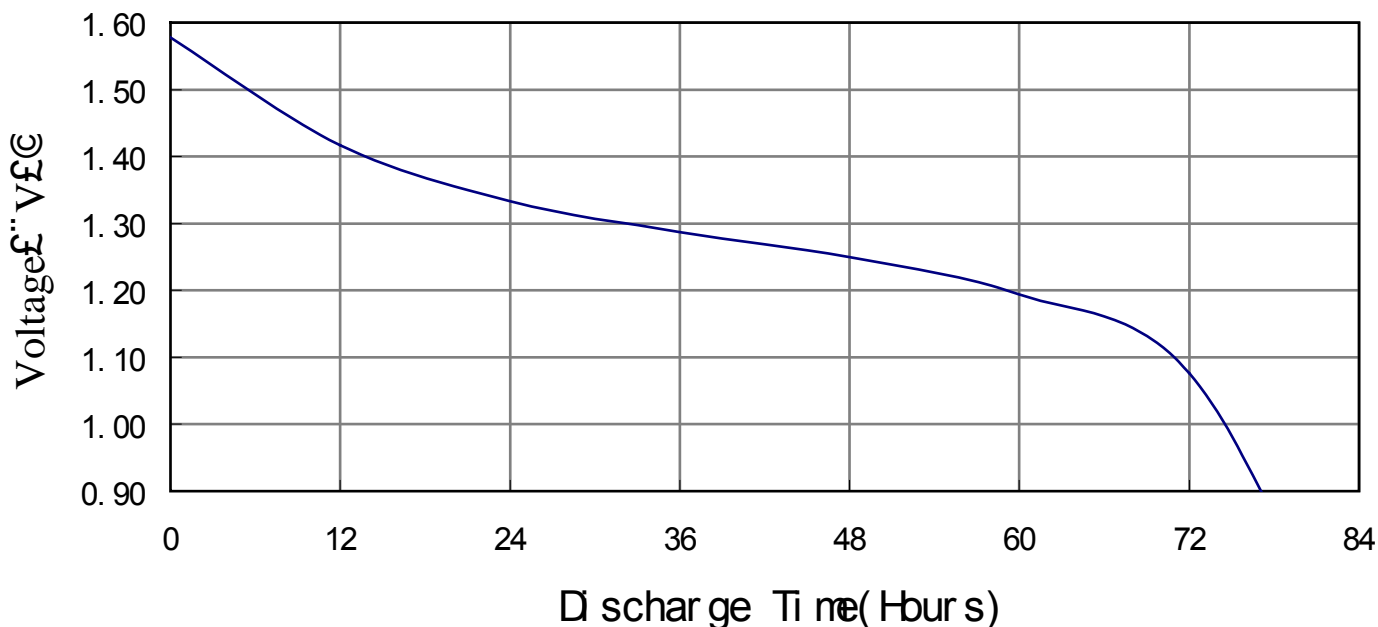
Dimensions 55×53×23mm Weight 32 g

Chemical System : Alkaline manganese button batteries
Model No. : LR1142 (LR43 AG12 186)
Nominal Dimensions : $\Phi 11.60 \times 4.20 \text{mm}$
Nominal Voltage : 1.50V
Average Weight : 1.50g
Applications : Watch, Calculator, Electronic toy, etc.
Shelf Life : Not less than 90% of the service capacity, following 1st year storage at 20°C.
Loading : 1000Ω(20°C)
Cut Off Voltage : 0.90V
Capacity : 108mAh

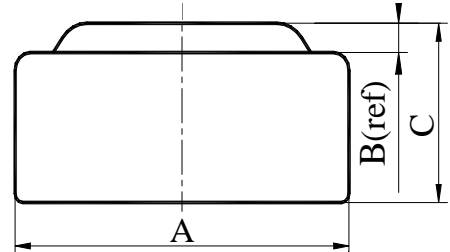


Dimensions	Unit: mm
A	11.40----11.60
B	0.40(ref)
C	3.90----4.20

Typical Discharge Characteristics at 20

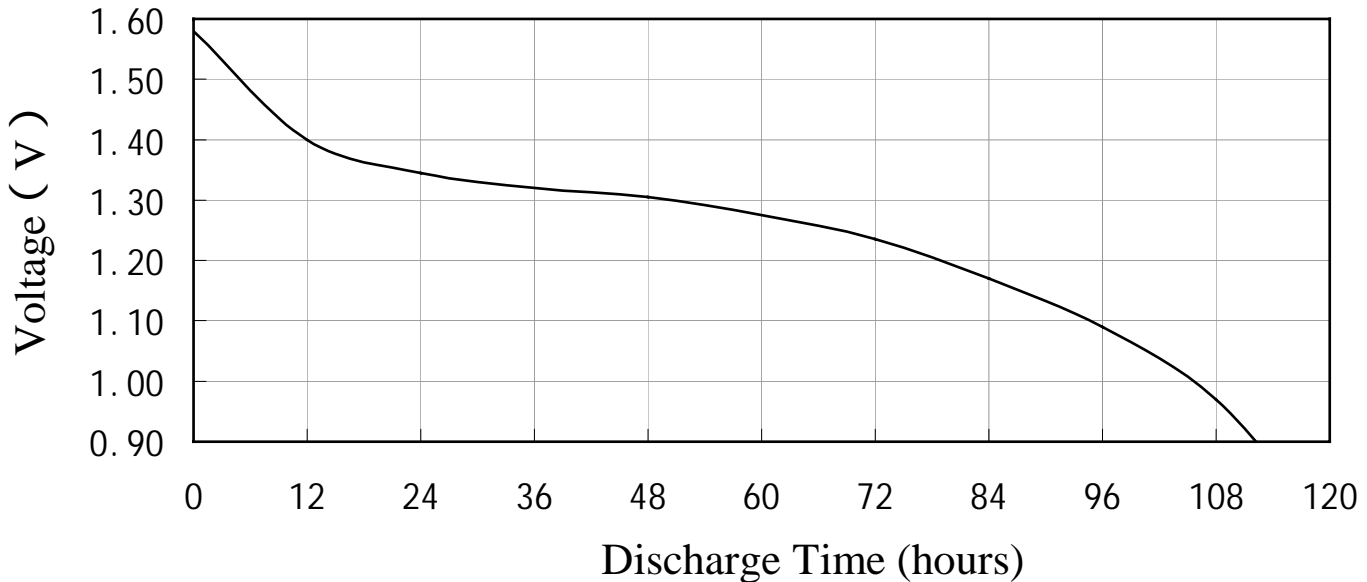


- Chemical System** : Alkaline manganese button batteries
- Model No.** : LR1154 (LR44 AG13 A76)
- Nominal Dimensions**: 11.60 × 5.40mm
- Nominal Voltage** : 1.50V
- Average Weight** : 1.92g
- Applications** : Watch, Calculator,
Electronic toy, etc.
- Shelf Life** : Not less than 90% of the
service capacity, following
1st year storage at 20 °C
- Loading** : 1000 (20 mA)
- Cut Off Voltage** : 0.90V
- Capacity** : 145mAh

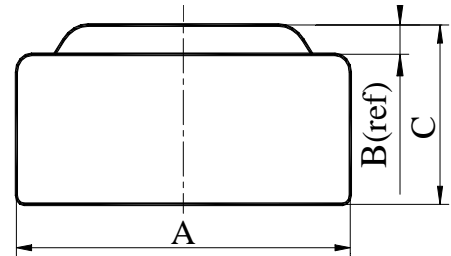


Dimensions	Unit: mm
A	11.40----11.60
B	0.50(ref)
C	5.10----5.40

Typical Discharge Characteristics at 20 °C

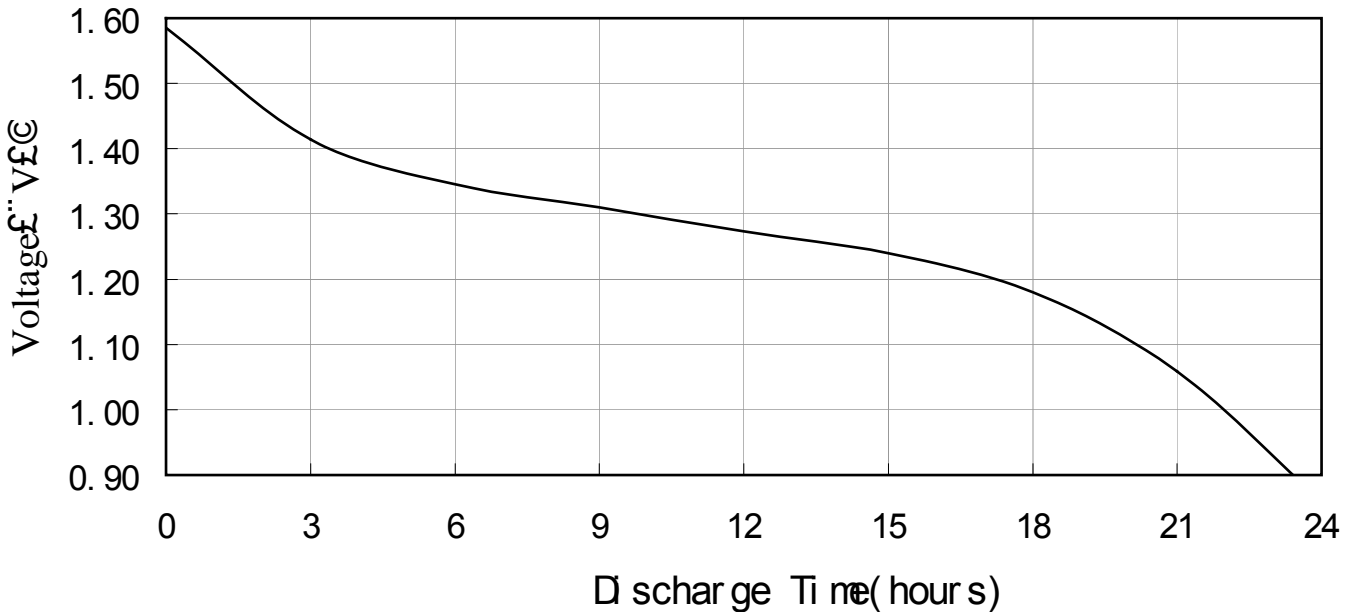


Chemical System : Alkaline manganese button batteries
Model No. : LR736 (LR41 AG3 192)
Nominal Dimensions: $\Phi 7.90 \times 3.60$ mm
Nominal Voltage : 1.50V
Average Weight : 0.61g
Applications : Watch, Calculator,
 Electronic toy, etc.
Shelf Life : Not less than 90% of the
 service capacity, following
 1st year storage at 20°C.
Loading : 1000Ω(20°C)
Cut Off Voltage : 0.90V
Capacity : 31mAh

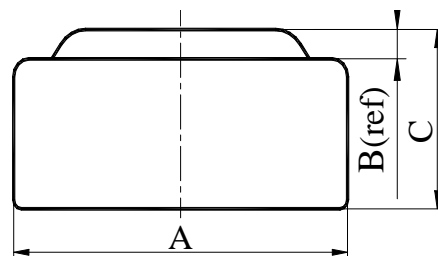


Dimensions	Unit: mm
A	7.75----7.90
B	0.40(ref)
C	3.30----3.60

Typical Discharge Characteristics at 20

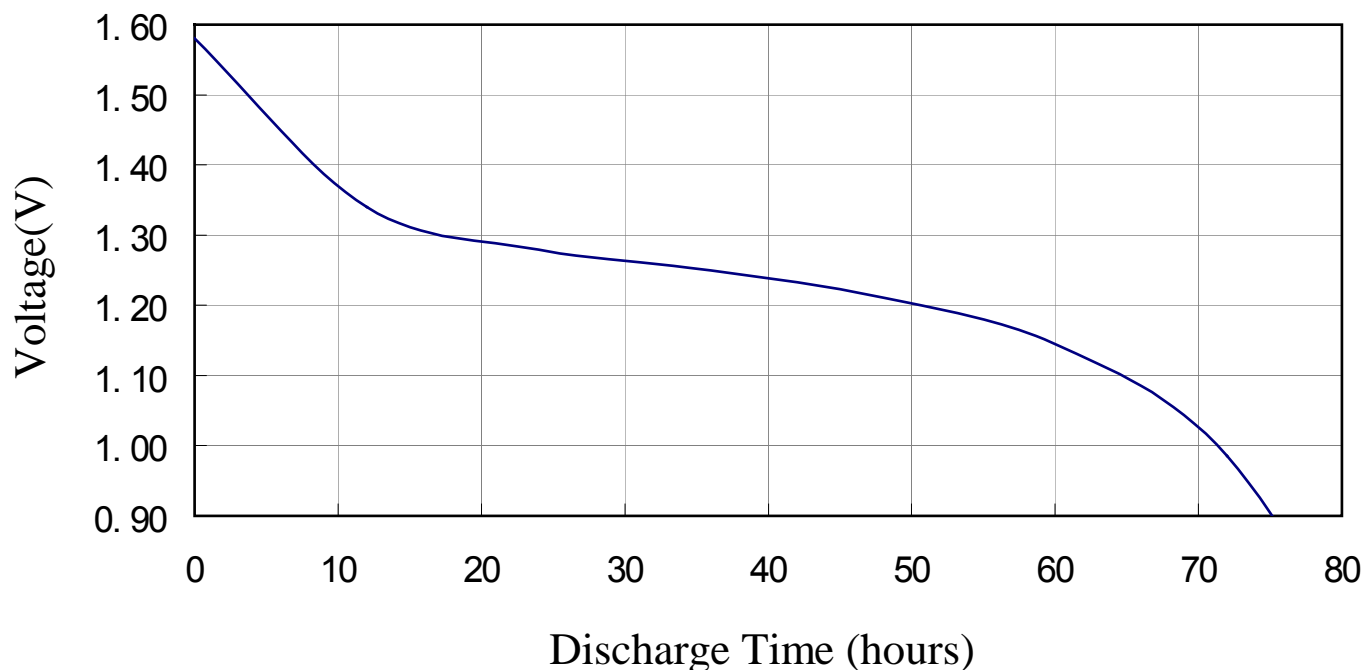


Chemical System : Alkaline manganese button batteries
Model No. : LR626 (LR66 AG4 177)
Nominal Dimensions : $\Phi 6.80 \times 2.60$ mm
Nominal Voltage : 1.50V
Average Weight : 0.35g
Applications : Watch, Calculator,
 Electronic toy, etc.
Shelf Life : Not less than 90% of the
 service capacity, following
 1st year storage at 20°C.
Loading : 4700Ω(20°C)
Cut Off Voltage : 0.90V
Capacity : 18mAh

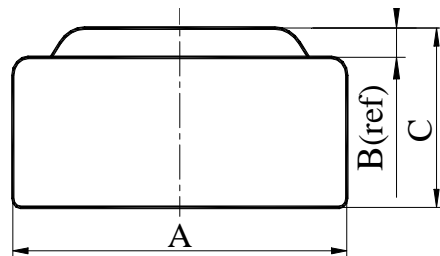


Dimensions	Unit: mm
A	6.70---6.80
B	0.25(ref)
C	2.40---2.60

Typical Discharge Characteristics at 20



Chemical System : Alkaline manganese button batteries
Model No. : LR621 (LR60 AG1 164)
Nominal Dimensions: $\Phi 6.80 \times 2.15\text{mm}$
Nominal Voltage : 1.50V
Average Weight : 0.30g
Applications : Watch, Calculator, Electronic toy, etc.
Shelf Life : Not less than 90% of the service capacity, following 1st year storage at 20°C.
Loading : 6800Ω(20°C)
Cut Off Voltage : 0.90V
Capacity : 13mAh



Dimensions	Unit: mm
A	6.70----6.80
B	0.25(ref)
C	1.95----2.15

Typical Discharge Characteristics at 20

