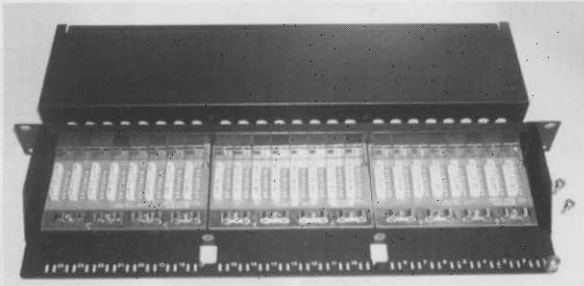


Full shielded patch panel installation instruction

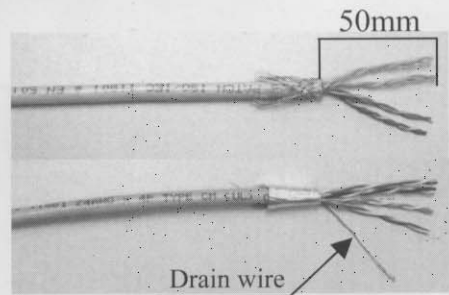
PPS series

1



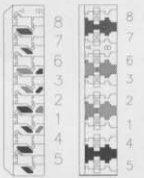
Load down the screws and opening the metal cover.

2



Strip approximately 50mm from the cable jacket, fold back the foil or braid shield, and separate the wires to 4 pair each.

3



T568A

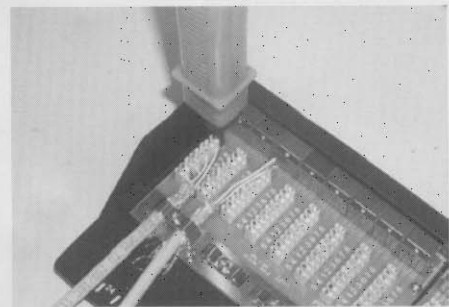
Pin 5 White/Blue
Pin 4 Blue
Pin 1 White/Green
Pin 2 Green
Pin 3 White/Orange
Pin 6 Orange
Pin 7 White/Brown
Pin 8 Brown

T568B

Pin 5 White/Blue
Pin 4 Blue
Pin 1 White/Orange
Pin 2 Orange
Pin 3 White/Green
Pin 6 Green
Pin 7 White/Brown
Pin 8 Brown

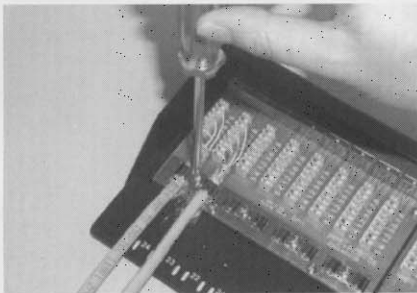
Follow the direction on the color-coding sticker to position T568A or T568B wiring, separate a little space on proper position and insert the wire pair by pair into each slot.

4



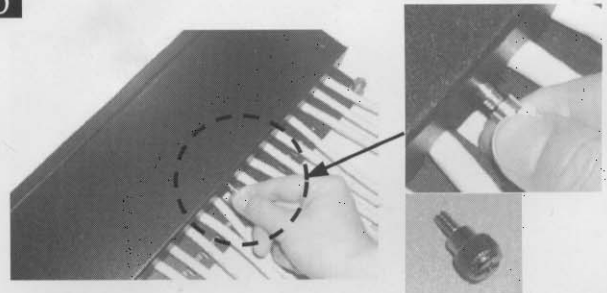
Press foil or braid shield to contact ground, and keep the cable straight.

5



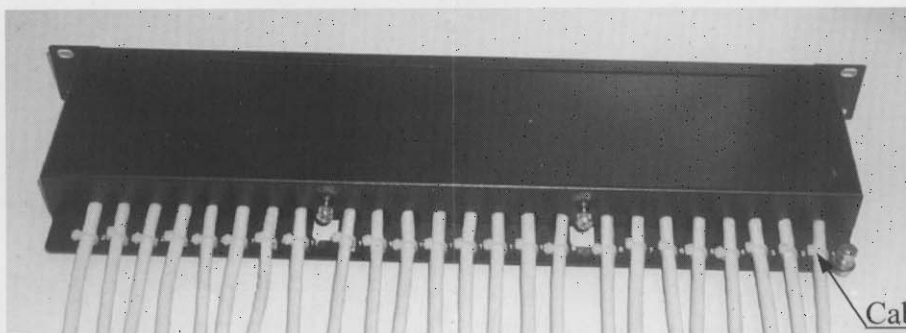
Fasten the screws through metal case to hold tightly down for two cable jackets in the same time.

6



Place the metal cover onto the bottom case and fasten screws.

7



Then complete the installation.

Abm: 44x253x135 (HxBxT)