

GRAND Video Console II

Video to VGA converter for High Resolution Video Picture

User's Manual

CONTENTS

Chapter 1. Welcome to Grand Video Console II.....	
1.1 Introduction.....	
1.2 Product Features.....	
1.3 System Requirements.....	
1.4 Package Contents.....	
Chapter 2. Install Grand Video Console II.....	
2.1 Connectors of Video Console II.....	
2.2 Remote controller function button.....	
2.3 Installation for IBM PC User.....	
Chapter 3. Trouble Shooting.....	

Version : 1.0

Issue: 16/04/2004

P/N:34338000

CHAPTER 1

Welcome to Grand Video Console II

(Video to VGA converter for High Resolution Video Picture)

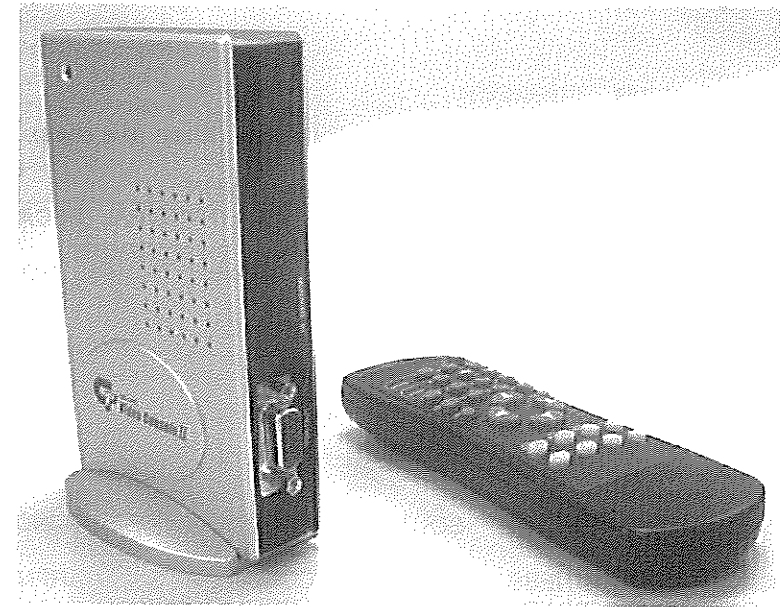


FIG.1 Grand Video Console II

1.1 Introduction

Welcome to the colorful multimedia world. Using the Grand Video Console II, you have made a best choice. The Grand Video Console II is a Video to VGA converter for Playing **High Resolution Video Picture** game. The DEINTERLACE can provide high quality picture & give sharp, stable image output to VGA. Input Video System 50-to-60 HZ frame rate detection and Output to **60Hz & 75Hz** to CRT/LCD monitor. It is easy to install, easy to operate, instantly change the source between PC, Video and S-Video with a remote control and turn your monitor into a high resolution picture output and **POP function**. POP (Picture on Picture) function enables you to

work with your PC and watch VIDEO/S-VIDEO (video game) in a window at the same time. The POP picture is sizeable and movable on PC screen. VGA o/p can be up to **1280*1024 (60Hz & 75Hz)** resolution. Plug it, you will extend the functions of your computer, enjoy the Game, DVD programming freely and easily.

1.2 Product Features

- The DEINTERLACE can provide high quality picture, It can give sharp, stable image output to VGA.
- Compatible for Multi Signal inputs: Video, S-Video, and PC.
- Input Video system 50-to-60HZ frame rate detection (NTSC/PAL (**SECAM**) for Video, S-Video).
- The DEINTERLACE output mode support 640*480, 800*600, 1024*768, **1280*1024. (60 Hz & 75 Hz)**
- No software driver required. It is applicable to all the O/S.
- Compact body and easy installation, no need to uncover PC case. No PC compatibility problem.
- Supports 3:2 pull down conversion for film mode.
- 3 D Motion-adaptive interfiled de-interlacing.
- Supports function OSD for display information.
- Supports function of MENU control.
- MENU control: PICTURE, SOUND, RESOLUTION, OSD FUNCTION, LANGUAGE, RESET.
- PICTURE : BRIGHTNESS , CONTRAST , COLOR , HUE , SHARPNESS , H.POSITION , 3/2 PULLDOWN , DYNAMIC , FREQUENCY.
- SOUND : BASS, BALANCE, MUTE.
- RESOLUTION : 640*480, 800*600, 1024*768, **1280*1024.**
- OSD FUNCTION : OSD POSITION, OSD COLOR.
- LANGUAGE : JAPANESE, ENGLISH. (Option 1)
Seven languages (**ENGLISH, FRENCH, GERMAN, SPANISH, ITALIAN, DUTCH, RUSSIAN**) (Option 2)
- RESET : RESET to default setting.
- FREQUENCY: **60 Hz and 75 Hz** for each resolution.

1.3 System Requirements

- No specific PC system required.
- VESA compatible VGA monitor.
- Video input device (e.g. VCR, VCD, DVD, V8, LD player, TV game devices, etc.)

1.4 Package Contents

This package contains the following items:

- Grand Video Console II(Video to VGA converter) x 1
- User's Manual x 1
- VGA 15 Pin to Mini-din 8 Pin cable x 1
- Stereo adapter x 1
- Audio cable x 1
- Remote Control x 1
- Battery AAA x 2
- Power Adapter x 1

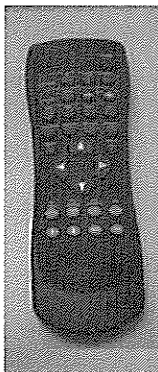



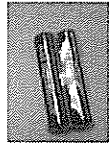
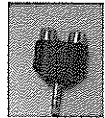
		
Remote Control	Power adapter	VGA 15 Pin to Mini-din 8 Pin cable
		
Audio cable	Battery AAA	Stereo adapter

FIG.2 Attachments of Grand Video Console II

CHAPTER 2

Install Grand Video Console II

The following section shows the function of controlling the **Grand Video Console II**.

Please refer to Fig.3 for the Outline of **Grand Video Console II**.

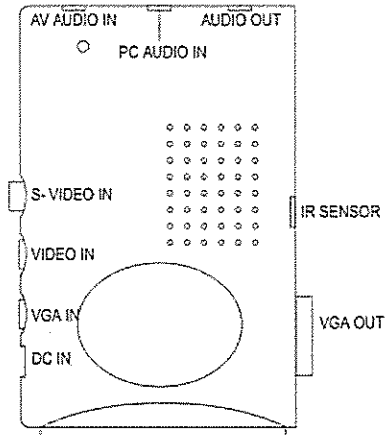


FIG.3 Outline of **Grand Video Console II**

2.1 Connectors of Video Console II

- **IR SENSOR** : Infrared input of remote controller.
- **AUDIO OUTPUT** : Stereo audio signal output, connect to (amplified) speaker.
- **AV AUDIO IN** : Connects to sound device or AUDIO OUTPUT of a VCD/DVD/V8/CCD etc.
- **DC IN** : Plug with power cable.
- **PC AUDIO IN** : Connects to your PC's sound card output.
- **VIDEO IN** : Connects to VIDEO OUT of video source (e.g. VCD/LD/DVD/V8 or TV GAME devices).
- **S-VIDEO IN** : Connects to S-VIDEO OUT of video source (e.g. VCD/LD/DVD/V8 or TV GAME devices).
- **VGA IN** : Connects the VGA cable to your PC.
- **VGA OUT** : Connects to your VGA monitor (CRT/LCD) supporting non-interlace format.

2.2 Remote Controller function button

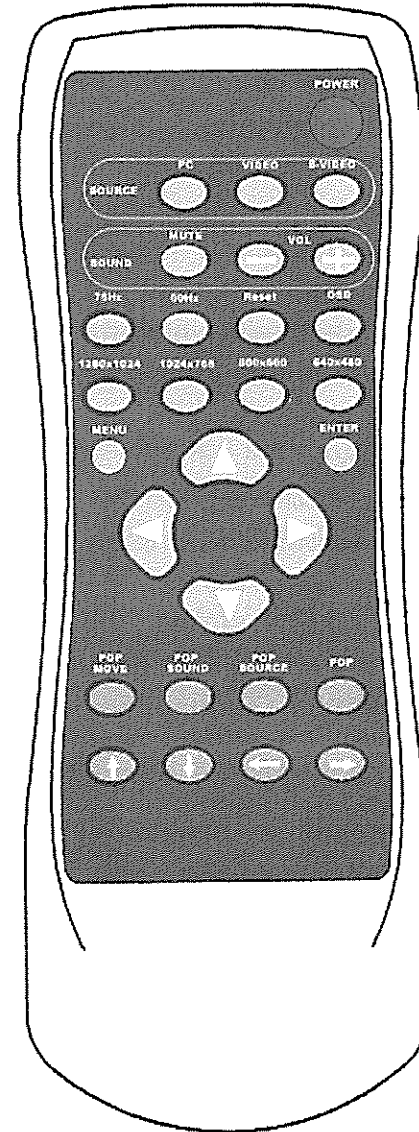


FIG.4 Remote controller of **Grand Video Console II**

- **POWER** : Toggle switch of on/off for power. Automatically save the setting when you turn off the power button.
- **PC** : To select the PC (VGA) input.
- **VIDEO** : To select the Video input.
- **S-VIDEO** : To select the S-Video input.
- **MUTE** : Toggle switch of on/off for sound.
- **VOL-** : Volume decreased. This item value is form 0 to 63.(Default value is 40)
- **VOL+** : Volume increment. This item value is form 0 to 63.(Default value is 40)
- **75 Hz** : To select the mode of 75Hz.
- **60 Hz** : To select the mode of 60Hz.
- **RESET** : Reset to default setting. (Include **BRIGHTNESS, CONTRAST, COLOR, HUE, SHARPNESS, H.POSITION, 3/2 PULLDOWN, DYNAMIC, BASS, BALANCE, VOL.**)
- **OSD** : Current status display.
- **1280x1024** : To select the resolution of 1280*1024.
- **1024x768** : To select the resolution of 1024*768.
- **800x600** : To select the resolution of 800*600.
- **640x480** : To select the resolution of 640*480.
- **MENU** : Press ▲ button or ▼ button to select **PICTURE, SOUND, RESOLUTION, OSD FUNCTION, LANGUAGE** and **RESET**.

1. PICTURE :

Press **ENTER** button and ▲/▼ button to select **BRIGHTNESS , CONTRAST , COLOR , HUE , SHARPNESS , H.POSITION , 3/2 PULLDOWN , DYNAMIC** and **FREQUENCY**.

> **BRIGHTNESS**

Press **ENTER** button and ◀/▶ button to modify **BRIGHTNESS** value.
Press ▶ button to increase. Press ◀ button to decrease. This item value is form 0 to 100. (Default value is 45)

> **CONTRAST**

Press **ENTER** button and ◀/▶ button to modify **CONTRAST** value.
Press ▶ button to increase. Press ◀ button to decrease. This item value is form 0 to 100. (Default value is 44)

> **COLOR**

Press **ENTER** button and ◀/▶ button to modify **COLOR** value.
Press ▶ button to increase. Press ◀ button to decrease. This item value is form 0 to 100. (Default value is 65)

> **HUE**

Press **ENTER** button and ◀/▶ button to modify **HUE** value.
Press ▶ button to increase. Press ◀ button to decrease. This item value is form 0 to 100. (Default value is 50)

> **SHARPNESS**

Press **ENTER** button and ◀/▶ button to modify **SHARPNESS** value.
Press ▶ button to increase. Press ◀ button to decrease. This item value is form 0 to 3. (Default value is 3)

> **H.POSITION**

Press **ENTER** button and ◀/▶ button to move **H.POSITION** value.
Press ▶ button to the right side movement. Press ◀ button to the left side movement. This item value is form 0 to 50. (Default value is 25)

> **2/3 PULLDOWN**

Press **ENTER** button and ◀/▶ button to change mode **ON** or **OFF**.
While seeing the movie, picture (movie) will be more smoothed by this function. (For NTSC only) (Default value is OFF)

> **DYNAMIC**

Press **ENTER** button and ◀/▶ button to modify **DYNAMIC** value.
Press ▶ button to improve the dynamic film picture. Press ◀ button to improve the static film picture. This item value is form 0 to 10. (Default value is 7)

> **FREQUENCY**

Press **ENTER** button and ◀/▶ button to change mode **60Hz** or **70Hz**.

2. SOUND

Press **ENTER** button and ▲/▼ button to select **BASS, BALANCE** and **MUTE**.

> **BASS**

Press **ENTER** button and ◀/▶ button to modify **BASS** value.

Press ► button to increase. Press ◀ button to decrease. This item value is form 0 to 14. (Default value is 7)

> **BALANCE**

Press **ENTER** button and ◀/► button to adjust the **BALANCE** of two speakers.

Press ► button to decrease the volume of left side speaker and press ◀ button to decrease right side speaker. Each speaker volume is separately. Range is form -32 to +32. (Default value is 0)

> **MUTE**

Press **ENTER** button and ◀/► button to change mode **ON** or **OFF**.

3. RESOLUTION

Press **ENTER** button and ▲/▼ button to select **640x480, 800x600, 1024x768, 1280x1024**.

4. OSD FUNCTION

Press **ENTER** button and ▲/▼ button to select **OSD POSITION** and **OSD COLOR**.

> **OSD POSITION**

Press **ENTER** button and ▲, ▼, ◀, ► button to adjust the position of display.

> **OSD COLOR**

Press **ENTER** button and ◀/► button to select the color of display.

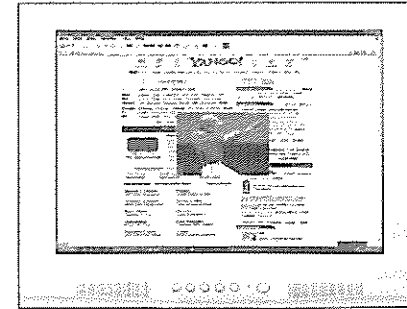
5. LANGUAGE

Press **ENTER** button and ▲/▼ button to select the language of **MENU**.

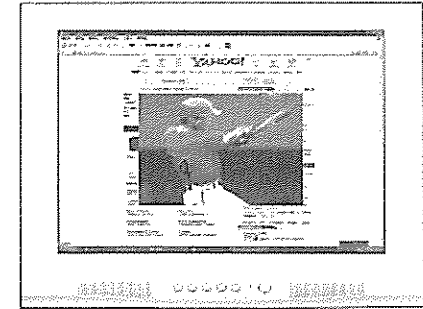
6. RESET

Press **ENTER** button to reset the Default setting. (Include **BRIGHTNESS, CONTRAST, COLOR, HUE, SHARPNESS, H.POSITION, 3/2 PULLDOWN, DYNAMIC, BASS, BALANCE, VOL.**)

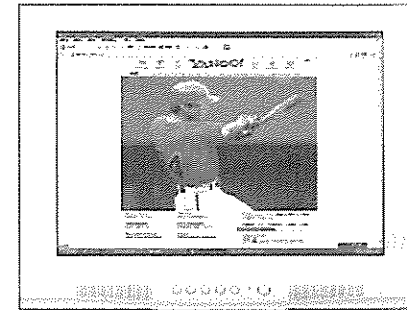
- **POP** : To select the size(1/4, 1/8, 1/16 & POP-Huge) of pop
- **POP SOURCE** : To select the source(S-Video or VIDEO) of pop
- **POP SOUND** : To select the "AUDIO OUT" from "AV AUDIO IN" or "PC AUDIO IN"
- **POP MOVE** : Press ↑ / ↓ / ← / → button to move the POP



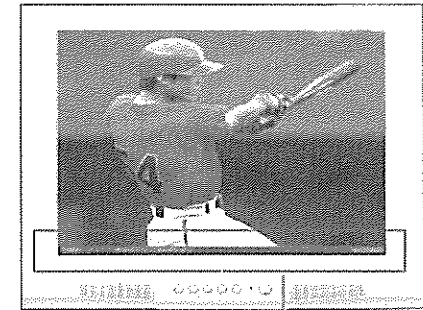
POP-1/16



POP-1/8

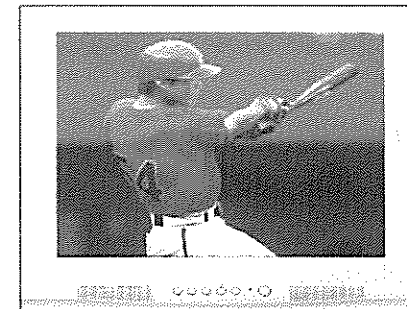


POP-1/4



POP-Huge

↓
Full screen besides window's pask bar



full screen

2.3 Installation for IBM PC Users

The **Grand Video Console II** is a "Plug and Display" Video to PC converter.

Please read the following steps carefully for the installation of the hardware & refer to Fig.5 for the installation for IBM PC Users.

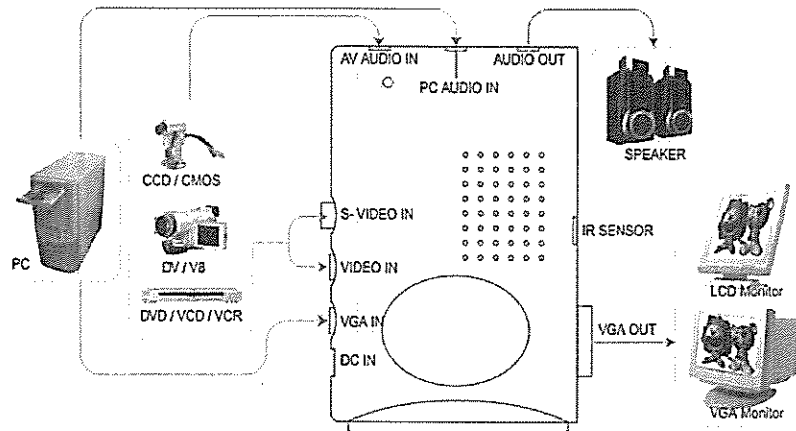


Fig.5 Installation

1. Make sure the power is turned OFF on all devices.
2. Be sure to make the proper connection with the supplied video cables.
3. Power on your PC.
4. Turn on your video devices(TV,DVD or VCD)
5. Power on the **Grand Video Console II**.
6. Select the input from **VGA IN**, **VIDEO IN** or **S-VIDEO IN** then you will get the picture.

CHAPTER 3

Trouble Shooting

The following are problems that might arise when using the Video Console II, and possible solutions of them.

Q: How can I enhance the display quality?

A: Please adjust the CONTRAST & BRIGHTNESS of the Monitor, LCD Monitor or Projector DEVICES to get the best output picture. With adjusting the contrast & brightness, the picture will be got the minimize the flicker effect.

Q: How to adjust the value into current range when I'm watching the movies, especially the action movies?

A: Please select the 2/3 PULLDOWN to ON and adjust the value of DYNAMIC when user system is NTSC.
When user system is PAL, please adjust the value of DYNAMIC.

When you need RMA or advanced technique service, please fill this form as detail as possible and FAX to your dealer.

Product S/N:			
Name:			
TEL No.:		FAX No.:	
E-mail address:			
Full Address:			
Hardware condition:			
Mainboard chipset:			
Mainboard CPU:		CPU clock:	MHz
Main memory:	MB	Cache memory:	KB
VGA card:		Display memory:	MB
Sound card:		Hard Disk:	MB
Other add-on cards:			
Monitor:		Horizontal Freq.:	KHz to KHz
		Vertical Freq.:	Hz to Hz
Problem description:			